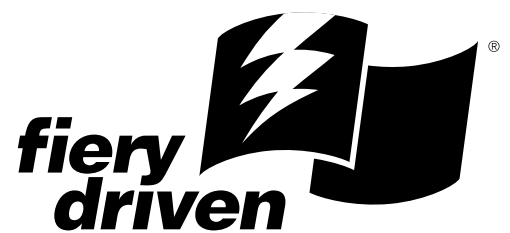

Operating Instructions Printing Guide



For safety, please read this manual carefully before you use this product and keep it handy for future reference.

Copyright © 2002 Electronics For Imaging. All rights reserved.

This publication is protected by copyright, and all rights are reserved. No part of it may be reproduced or transmitted in any form or by any means for any purpose without express prior written consent from Electronics For Imaging, except as expressly permitted herein. Information in this document is subject to change without notice and does not represent a commitment on the part of Electronics For Imaging.

The software described in this publication is furnished under license and may only be used or copied in accordance with the terms of such license.

This product may be covered by one or more of the following U.S. Patents: 4,500,919, 4,837,722, 5,212,546, 5,343,311, 5,424,754, 5,467,446, 5,506,946, 5,517,334, 5,537,516, 5,543,940, 5,553,200, 5,615,314, 5,619,624, 5,625,712, 5,666,436, 5,760,913, 5,818,645, 5,835,788, 5,867,179, 5,959,867, 5,970,174, 5,982,937, 5,995,724, 6,002,795, 6,025,922, 6,041,200, 6,065,041, 6,112,665, 6,122,407, 6,134,018, 6,141,120, 6,166,821, 6,185,335, 6,201,614, 6,215,562, 6,219,659, 6,222,641, 6,224,048, 6,225,974, 6,226,419, 6,238,105, 6,239,895, 6,256,108, 6,269,190, 6,289,122, 6,292,270, 6,310,697, 6,327,047, 6,327,050, 6,327,052, RE36,947, D406,117, D416,550, D417,864, D419,185, D426,206, D439,851, D444,793

Trademarks

ColorWise, EDOX, EFI, Fiery, the Fiery logo, Fiery Driven and RIP-While-Print are registered trademarks of Electronics For Imaging, Inc. in the U.S. Patent and Trademark Office and/or certain other foreign jurisdictions.

The eBeam logo, the Electronics For Imaging logo, the Fiery Driven logo, the Splash logo, AutoCal, ColorCal, Command WorkStation, DocBuilder, DocBuilder Pro, DocStream, eBeam, EFI Color Profiler, EFI Production System, EFI ScanBuilder, Fiery X2, Fiery X2e, Fiery X2-W, Fiery X3e, Fiery X4, Fiery ZX, Fiery Z4, Fiery Z5, Fiery Z9, Fiery Z16, Fiery Z18, Fiery Document WorkStation, Fiery Downloader, Fiery Driver, Fiery FreeForm, Fiery Link, Fiery Prints, Fiery Print Calibrator, Fiery Production System, Fiery Scan, Fiery ScanBuilder, Fiery Spark, Fiery Spooler, Fiery WebInstaller, Fiery WebScan, Fiery WebSpooler, Fiery WebStatus, Fiery WebTools, NetWise, RIPChips, Splash, Velocity, Velocity Balance, Velocity Build, Velocity Design, Velocity Estimate, Velocity Scan, and VisualCal are trademarks of Electronics For Imaging, Inc.

All other terms and product names may be trademarks or registered trademarks of their respective owners, and are hereby acknowledged.

Legal Notices

APPLE COMPUTER, INC. ("APPLE") MAKES NO WARRANTIES, EXPRESS OR IMPLIED, INCLUDING WITHOUT LIMITATION THE IMPLIED WARRANTIES OF MERCHANTABILITY AND FITNESS FOR A PARTICULAR PURPOSE, REGARDING THE APPLE SOFTWARE. APPLE DOES NOT WARRANT, GUARANTEE, OR MAKE ANY REPRESENTATIONS REGARDING THE USE OR THE RESULTS OF THE USE OF THE APPLE SOFTWARE IN TERMS OF ITS CORRECTNESS, ACCURACY, RELIABILITY, CURRENTNESS, OR OTHERWISE. THE ENTIRE RISK AS TO THE RESULTS AND PERFORMANCE OF THE APPLE SOFTWARE IS ASSUMED BY YOU. THE EXCLUSION OF IMPLIED WARRANTIES IS NOT PERMITTED BY SOME STATES. THE ABOVE EXCLUSION MAY NOT APPLY TO YOU.

IN NO EVENT WILL APPLE, ITS DIRECTORS, OFFICERS, EMPLOYEES OR AGENTS BE LIABLE TO YOU FOR ANY CONSEQUENTIAL, INCIDENTAL OR INDIRECT DAMAGES (INCLUDING DAMAGES FOR LOSS OF BUSINESS PROFITS, BUSINESS INTERRUPTION, LOSS OF BUSINESS INFORMATION, AND THE LIKE) ARISING OUT OF THE USE OR INABILITY TO USE THE APPLE SOFTWARE EVEN IF APPLE HAS BEEN ADVISED OF THE POSSIBILITY OF SUCH DAMAGES. BECAUSE SOME STATES DO NOT ALLOW THE EXCLUSION OR LIMITATION OF LIABILITY FOR CONSEQUENTIAL OR INCIDENTAL DAMAGES, THE ABOVE LIMITATIONS MAY NOT APPLY TO YOU. Apple's liability to you for actual damages from any cause whatsoever, and regardless of the form of the action (whether in contract, tort [including negligence], product liability or otherwise), will be limited to \$50.

Restricted Rights Legends

For defense agencies: Restricted Rights Legend. Use, reproduction, or disclosure is subject to restrictions set forth in subparagraph (c)(1)(ii) of the Rights in Technical Data and Computer Software clause at 252.227.7013.

For civilian agencies: Restricted Rights Legend. Use, reproduction, or disclosure is subject to restrictions set forth in subparagraph (a) through (d) of the commercial Computer Software Restricted Rights clause at 52.227-19 and the limitations set forth in Electronics For Imaging's standard commercial agreement for this software. Unpublished rights reserved under the copyright laws of the United States.

Part Number:

FCC Information

WARNING: FCC Regulations state that any unauthorized changes or modifications to this equipment not expressly approved by the manufacturer could void the user's authority to operate this equipment.

Class B Declaration of Conformity

This equipment has been tested and found to comply with the limits for a class B digital device, pursuant to Part 15 of the FCC rules. These limits are designed to provide reasonable protection against harmful interference in a residential installation. This equipment generates, uses and can radiate radio frequency energy and if not installed and used in accordance with the instructions, may cause harmful interference to radio communications. However, there is no guarantee that interference will not occur in a particular installation.

If this equipment does cause harmful interference to radio or television reception, which can be determined by turning the equipment off and on, the user is encouraged to try to correct the interference by one or more of the following measures:

Reorient or relocate the receiving antenna.

Increase the separation between the equipment and receiver.

Connect the equipment into an outlet on a circuit different from that to which the receiver is connected.

Consult the dealer or an experienced radio/TV technician for help.

In order to maintain compliance with FCC regulations, shielded cables must be used with this equipment. Operation with non-approved equipment or unshielded cables is likely to result in interference to radio and TV reception. The user is cautioned that changes and modifications made to the equipment without the approval of manufacturer could void the user's authority to operate this equipment.

Industry Canada Class B Notice

This Class B digital apparatus complies with Canadian ICES-003.

Avis de Conformité Classe B de l'Industrie Canada

Cet appareil numérique de la Classe B est conforme à la norme NMB-003 du Canada.

Certificate by Manufacturer/Importer

This is to certify that the FC07 is shielded against radio interference in accordance with the provisions of VFG 243/1991. The German Postal Services have been advised that this device is being put on the market and that they have been given the right to inspect the series for compliance with the regulations.

Bescheinigung des Herstellers/Importeurs

Hiermit wird bescheinigt, dass der FC07 im Übereinstimmung mit den Bestimmungen der VFG 243/1991 funktentstört ist. Der Deutschen Bundespost wurde das Inverkehrbringen dieses Gerätes angezeigt und die Berechtigung zur Überprüfung der Serie auf Einhaltung der Bestimmungen eingeräumt.

RFI Compliance Notice

This equipment has been tested concerning compliance with the relevant RFI protection requirements both individually and on system level (to simulate normal operation conditions). However, it is possible that these RFI Requirements are not met under certain unfavorable conditions in other installations. It is the user who is responsible for compliance of his particular installation.

Dieses Gerät wurde sowohl einzeln als auch in einer Anlage, die einen normalen Anwendungsfall nachbildet, auf die Einhaltung der Funkentstörbestimmungen geprüft. Es ist jedoch möglich, dass die Funkentstörbestimmungen unter ungünstigen Umständen bei anderen Gerätekombinationen nicht eingehalten werden. Für die Einhaltung der Funkentstörbestimmungen einer gesamten Anlage, in der dieses Gerät betrieben wird, ist der Betreiber verantwortlich.

Compliance with applicable regulations depends on the use of shielded cables. It is the user who is responsible for procuring the appropriate cables.

Die Einhaltung zutreffender Bestimmungen hängt davon ab, dass geschirmte Ausführungen benützt werden. Für die Beschaffung richtiger Ausführungen ist der Betreiber verantwortlich.

Software License Agreement

YOU SHOULD CAREFULLY READ THE FOLLOWING TERMS AND CONDITIONS BEFORE USING THIS SOFTWARE. IF YOU DO NOT AGREE TO THE TERMS AND CONDITIONS OF THIS AGREEMENT, DO NOT USE THE SOFTWARE. INSTALLING OR USING THE SOFTWARE INDICATES THAT YOU AGREE TO AND ACCEPT THE TERMS OF THIS AGREEMENT. IF YOU DO NOT AGREE TO ACCEPT THE TERMS OF THIS AGREEMENT YOU MAY RETURN THE UNUSED SOFTWARE FOR A FULL REFUND TO THE PLACE OF PURCHASE.

License

EFI grants you a non-exclusive license to use the software ("Software") and accompanying documentation ("Documentation") included with the Product. The Software is licensed, not sold. You may use the Software solely for your own customary business or personal purposes. You may not rent, lease, sublicense or lend the Software. You may, however, permanently transfer all of your rights under this Agreement to another person or legal entity provided that: (1) you transfer to the person or entity all of the Software and Documentation (including all copies, updates, upgrades, prior versions, component parts, the media and printed materials, and this Agreement); (2) you retain no copies of the Software and Documentation, including copies stored on a computer; and (3) the recipient agrees to the terms and conditions of this Agreement.

You may not make or have made, or permit to be made, any copies of the Software or portions thereof, except as necessary for backup or archive purposes in support of your use of the Software as permitted hereunder. You may not copy the Documentation. You may not attempt to alter, disassemble, decompiler, decrypt or reverse engineer the Software.

Proprietary Rights

You acknowledge that the Software is proprietary to EFI and its suppliers and that title and other intellectual property rights therein remain with EFI and its suppliers. Except as stated above, this Agreement does not grant you any right to patents, copyrights, trade secrets, trademarks (whether registered or unregistered), or any other rights, franchises or licenses in respect of the Software. You may not adopt or use any trademark or trade name which is likely to be similar to or confusing with that of EFI or any of its suppliers or take any other action which impairs or reduces the trademark rights of EFI or its suppliers.

Confidentiality

You agree to hold the Software in confidence, disclosing the Software only to authorized users having a need to use the Software as permitted by this Agreement and to take all reasonable precautions to prevent disclosure to other parties.

Remedies and Termination

Unauthorized use, copying or disclosure of the Software, or any breach of this Agreement will result in automatic termination of this license and will make available to EFI other legal remedies. In the event of termination, you must destroy all copies of the Software and all of its component parts. All provisions of this Agreement relating to disclaimers of warranties, limitation of liability, remedies, damages, and EFI's proprietary rights shall survive termination.

Limited Warranty and Disclaimer

EFI warrants to the original purchaser ("Customer") for thirty (30) days from the date of original purchase from EFI or its authorized retailer that the Software will perform in substantial conformance to the Documentation when the Product is used as authorized by EFI's specifications. EFI warrants the media containing the Software against failure during the above warranty period. EFI makes no warranty or representation that the Software will meet your specific requirements, that the operation of the Software will be uninterrupted or error free, or that all defects in the Software will be corrected. EFI makes no warranty, implied or otherwise, regarding the performance or reliability of any third party products (software or hardware) not provided by EFI. THE INSTALLATION OF ANY THIRD PARTY PRODUCTS OTHER THAN AS AUTHORIZED BY EFI WILL VOID THIS WARRANTY. IN ADDITION, USE, MODIFICATION, AND/OR REPAIR OF THE PRODUCT OTHER THAN AS AUTHORIZED BY EFI WILL VOID THIS WARRANTY.

EXCEPT FOR THE ABOVE EXPRESS LIMITED WARRANTY, EFI MAKES AND YOU RECEIVE NO WARRANTIES OR CONDITIONS ON THE SOFTWARE, EXPRESS, IMPLIED, STATUTORY, OR IN ANY OTHER PROVISION OF THIS AGREEMENT OR COMMUNICATION WITH YOU, AND EFI SPECIFICALLY DISCLAIMS ANY IMPLIED WARRANTY OR CONDITION OF MERCHANTABILITY OR FITNESS FOR A PARTICULAR PURPOSE OR NONINFRINGEMENT OF THIRD PARTY RIGHTS.

Limitation of Liability

TO THE MAXIMUM EXTENT PERMITTED BY LAW, EFI AND ITS SUPPLIERS SHALL NOT BE LIABLE FOR ANY DAMAGES, INCLUDING LOSS OF DATA, LOST PROFITS, COST OF COVER OR OTHER SPECIAL, INCIDENTAL, CONSEQUENTIAL OR INDIRECT DAMAGES ARISING FROM THE SALE, INSTALLATION, MAINTENANCE, USE, PERFORMANCE OR FAILURE OF THE SOFTWARE, HOWEVER CAUSED AND ON ANY THEORY OF LIABILITY. THIS LIMITATION WILL APPLY EVEN IF EFI HAS BEEN ADVISED OF THE POSSIBILITY OF SUCH DAMAGE. YOU ACKNOWLEDGE THAT THE PRICE OF THE PRODUCT REFLECTS THIS ALLOCATION OF RISK. BECAUSE SOME JURISDICTIONS DO NOT ALLOW THE EXCLUSION OR LIMITATION OF LIABILITY FOR CONSEQUENTIAL OR INCIDENTAL DAMAGES, THE ABOVE LIMITATION MAY NOT APPLY TO YOU.

Export Controls

You agree that you will not export or re-export the Software in any form in violation of any applicable laws or regulations of the United States or the country in which you obtained them.

U.S. Government Restricted Rights:

The Software and Documentation are provided with RESTRICTED RIGHTS. Use, duplication, or disclosure by the United States Government is subject to restrictions as set forth in subparagraph (c)(1)(ii) of the Rights in Technical Data and Computer Software clause at DFARS 252.227-7013 or subparagraphs (c)(1) and (2) of the Commercial Computer Software Restricted Rights at 48 CFR 52.227-19, as applicable.

General

The laws of the State of California govern this Agreement. You agree that this Agreement shall not be subject to the United Nations Convention on Contracts for the International Sale of Goods (1980). This Agreement is the entire agreement held between us and supersedes any other communications or advertising with respect to the Software. If any provision of this Agreement is held invalid, the remainder of this Agreement shall continue in full force and effect.

If you have any questions, please see EFI's web site at www.efi.com.

Electronics For Imaging
303 Velocity Way
Foster City, CA 94404

Contents

Preface

About this manual	xii
About the documentation	xiii
How the Fiery 3850C works	xiii
About printer drivers and PPDs/PDDs	xiii
Supported paper sizes	xiii
Before you begin	xiv

Chapter 1: Printing from Windows Computers

Printing from applications	1-1
Setting options and printing from Windows 9x/Me	1-1
Setting options and printing from Windows NT 4.0	1-12
Setting options and printing using the PostScript printer driver or the PCL driver on Windows 2000	1-16
Working with custom page sizes in Windows 9x/Me	1-22
Working with custom page sizes in Windows NT 4.0	1-24
Working with custom page sizes in Windows 2000	1-29
Printing to the parallel port	1-34
Saving files to print at a remote location	1-34

Chapter 2: Printing from Mac OS Computers

Printing from applications	2-1
Selecting the Fiery 3850C in the Chooser	2-1
Setting options and printing from Mac OS computers	2-3
Defining custom page sizes	2-6

Chapter 3: Printing from UNIX Workstations

Printing to the Fiery 3850C	3-1
-----------------------------	-----

Chapter 4: Special Features

Printing simulations	4-1
Printing duplex pages	4-2
Check and Print Jobs	4-2
Secured Print Jobs	4-4
Entering User Codes	4-5

Chapter 5: Tracking and Managing Print Jobs

Fiery WebTools	5-1
Checking Fiery 3850C status with the Status WebTool	5-2
Accessing information with WebLink	5-3
Downloading files with WebDownloader	5-3

Appendix A: Print Options

Where to set print options	A-1
Print option override hierarchy	A-2
Default settings	A-2
More about print options	A-10

Appendix B: Font Lists

PostScript and PCL printer fonts	B-1
Adobe Type 1 fonts	B-1
TrueType fonts	B-7
PCL printer fonts	B-8

Appendix C: Troubleshooting

Maintaining optimal system performance	C-1
Troubleshooting	C-2
General printing problems	C-2
Problems with print quality	C-4
Problems with Fiery Downloader	C-5
Problems with Fiery WebTools	C-6

Index

Preface

The Fiery 3850C™ enables you to use your printer as a networked printer. You can use the Fiery 3850C to print final documents or to proof jobs you will later print on an offset press. You send a print job to the Fiery 3850C as you would to any other printer—you select it from the Printers dialog box on Microsoft Windows computers, or in the Chooser on Apple Mac OS computers—and then print from within any application.

NOTE: The name “Aero” is used in illustrations to represent the Fiery 3850C. The term “Windows 9x/Me” is used in this manual to refer to Windows 95/98/Me. Individual differences are noted. Windows XP is supported. If you are using Windows XP, follow the procedures for Windows 2000.

If you have purchased the Command WorkStation, the Fiery 3850C includes Command WorkStation™ software, which enables an operator to manage all jobs sent to the Fiery 3850C. Some of the job management features of the Command WorkStation™ are also available from Fiery WebSpooler. Although it might not be the case at all sites, it is assumed that an operator controls and manages jobs sent by users from remote workstations. For information of the features of the Command WorkStation, see the *Job Management Guide*.

About this manual

This manual is intended for those remote users who send jobs via the network between their workstation and the Fiery 3850C. It covers the following topics:

- Printing from a Windows computer
- Printing from a Mac OS computer
- Printing from UNIX
- Using special features, such as printing duplex pages
- Monitoring jobs and accessing information using Fiery WebTools™.
- Specifying and overriding job settings, a list of fonts installed on the Fiery 3850C, and troubleshooting information

About the documentation

This manual is part of a set of Fiery 3850C documentation that includes the following manuals for users and system administrators:

- The *Configuration Guide* explains basic configuration and administration of the Fiery 3850C for the supported platforms and network environments. It also includes guidelines for setting up UNIX, Windows NT 4.0, Windows 2000/XP and Novel NetWare servers to provide PCL and PostScript printing services to clients.
- *Getting Started* describes how to install software to enable users to print to the Fiery 3850C. Specifically, it describes installation of the PCL and PostScript printer drivers, printer description files, and other user software provided on the User Software CD. It also explains how to connect each user to the network.
- The *Printing Guide* describes the printing features of the Fiery 3850C for users who send jobs via remote workstations on the network or via a direct parallel port connection.
- The *Color Guide* provides information on managing the color output of your Fiery 3850C. It addresses concepts and issues associated with printing to the Fiery 3850C and outlines key workflow scenarios. This manual explains how to calibrate your printer and take advantage of the ColorWise color management system, as well as features of ColorWise Pro Tools. In addition, the *Color Guide* offers information on printing from popular Windows and Mac OS applications.
- The *Job Management Guide* explains the functions of the Fiery 3850C client utilities, including the Command WorkStation, and how they can be used to manage jobs. This book is intended for an operator or administrator, or a user with the necessary access privileges, who needs to monitor and manage job flow and troubleshoot problems that may arise.
- *Release Notes* provide last-minute product information and workarounds for some of the problems you may encounter.

How the Fiery 3850C works

The Fiery 3850C receives files from computers on the network, processes (RIPs) those files, and then sends them to the printer's print engine for printing.

Windows and Mac OS computers communicate with the Fiery 3850C by means of a PostScript printer driver and PostScript printer description (PPD) files. Windows computers can also communicate with the Fiery 3850C by means of a Printer Control Language (PCL) printer driver and PDD files (PCL's equivalent of PPD files). Both drivers enable you to use special features of the Fiery 3850C from the Print dialog box.

About printer drivers and PPDs/PDDs

A printer driver manages printing communication between your application software and the printer. It interprets the instructions generated by the application software, merges those instructions with printer-specific PPD/PDD options you specify, and translates all that information into PostScript or PCL, a language the printer understands. In other words, the printer driver writes a PostScript or PCL file based on your original file and the options you set from the Print dialog box.

A PPD/PDD file contains information about a particular device's features and capabilities (for example, what paper sizes and media types are supported). The printer driver reads the information in the PPD/PDD file and presents that information to you in the form of options you can choose from the Print dialog box. The PPD/PDD for the Fiery 3850C includes information about the features of both the printer and the Fiery 3850C.

For information on the PPD/PDD options, see Appendix A.

Supported paper sizes

The Fiery 3850C supports PostScript at 600 and 1200 dpi (dots per inch) and PCL at 600 dpi on a wide range of paper sizes. For more information, see the description of the Paper Size print option in Appendix A.

Before you begin

Before using the Fiery 3850C, follow these steps:

1. Confirm that the system administrator has completed Setup, as described in the *Configuration Guide*.

2. Find out what printer defaults the administrator specified in Setup.

These default settings can affect the results of your print jobs. Check with your administrator or operator for information on these default settings.

3. Confirm that the user software is installed correctly on your workstation, as described in *Getting Started*.

4. Find out how your workstation is configured for printing on the network.

If your site has an operator who controls all printing, you may have access to the Hold queue only. In this case, all jobs you send are spooled to the Fiery 3850C and held until the operator sends them to their next stage of processing.

You may also have access to the Print queue. If you send jobs to this queue, jobs spool to the Fiery 3850C and proceed to RIP and print according to your job settings—unless someone (you, or an operator, for example) intervenes.

Lastly, you may have access to the Direct connection, which sends jobs straight to the server without spooling.

5. Find out whether the Fiery 3850C is set up to use Fiery WebTools and what your access privileges are.

The administrator may or may not have enabled access to the server via the Internet (or an intranet). If access is enabled, a password may be required to utilize certain functions.

1

1-1 | Printing from applications

Chapter 1: Printing from Windows Computers

This chapter describes how to print to the Fiery 3850C from Windows 9x/Me, Windows NT 4.0, and Windows 2000. You can print from a networked Windows computer, from a computer using Windows (SMB) printing. If you plan to print files at another location, you should follow the procedures described in “Saving files to print at a remote location” on page 1-34.

NOTE: If you are using Windows XP, follow the procedures for Windows 2000.

Another way to print from a Windows computer is to download PCL, PostScript, Encapsulated PostScript (EPS), or Portable Document Format (PDF) files using WebDownloader. For details on using WebDownloader, see Chapter 5.

NOTE: For information on setting up the Windows environment for printing with Windows servers connected to the Fiery 3850C, see the *Configuration Guide*. For information on how to connect to the Fiery 3850C over the network, install printer drivers, and install the Fiery utilities, see *Getting Started*.

Printing from applications

Once you have installed the Fiery 3850C printer driver and set it to the proper port as described in *Getting Started*, you can print directly from most Windows applications. Simply choose the Print command from within your application.

Setting options and printing from Windows 9x/Me

To print from Windows 9x/Me, use either the PCL printer driver or the Adobe PostScript printer driver for Windows 9x/Me. Both drivers are included with the Fiery 3850C user software. See *Getting Started* for more information.

Once you have installed the PCL printer driver and PDD file, or the Adobe PostScript printer driver and the PPD file, you can specify print settings for a particular job and print it to the Fiery 3850C.

1

1-2 Printing from Windows Computers

To print from Windows 9x/Me applications by connecting your computer to a print server via the network, one of the following is required: a NetWare server, a Windows NT 4.0 server, or a UNIX server. For more information, see the *Configuration Guide*.

To print from Windows 9x/Me applications without connecting to a print server, you can use Windows (SMB) printing. For more information, see *Getting Started*.

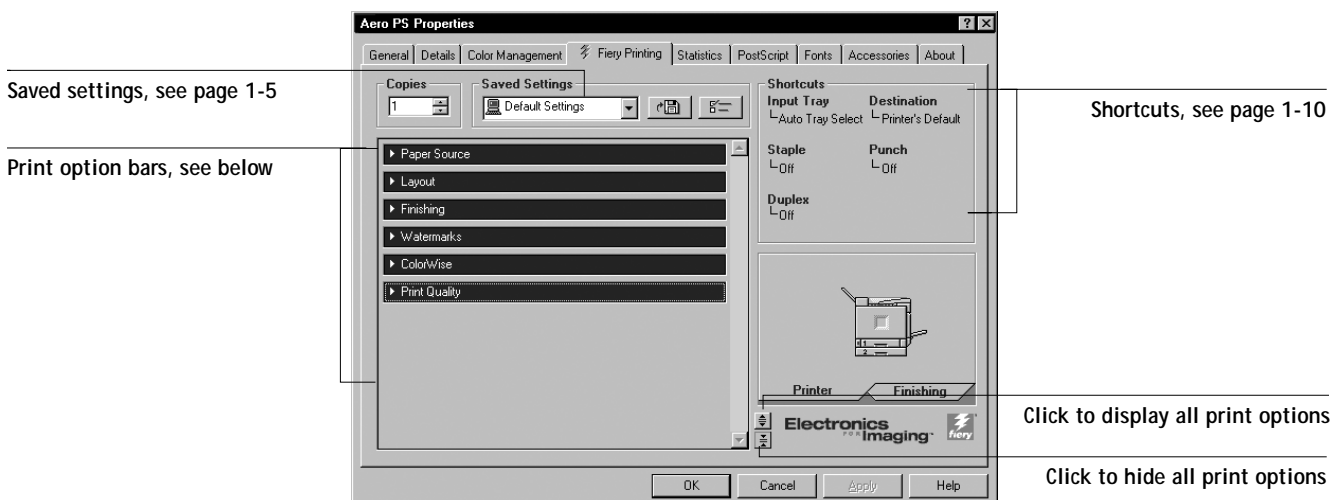
The procedures provide examples on how to use the driver to specify print options. For information about specific print options, refer to Appendix A, "Print Options" .

NOTE: The following procedures use Windows 98 PostScript illustrations.

NOTE: The interface may vary slightly depending on whether you are using the PostScript or PCL driver.

TO SET PRINT OPTIONS AND PRINT FROM WINDOWS 9X/ME USING THE PCL OR ADOBE POSTSCRIPT PRINTER DRIVER

1. Click the Start button, point to Settings, and click Printers.
2. Select the icon for the Fiery 3850C and choose Properties from the File menu.
3. Click the Fiery Printing tab.



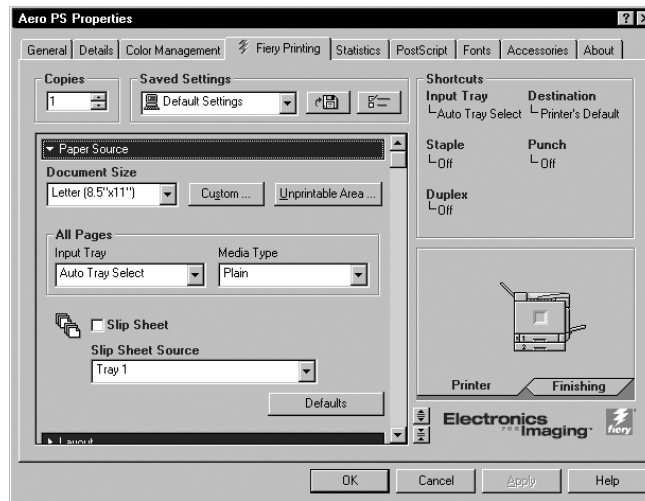
1

1-3 Printing from applications

The Fiery Printing tab serves as the control center for all frequently used printing functions.

4. Click the Paper Source print option bar.

In the Document Size area, specify the page size for the job.



From the Input Tray menu, choose the paper source tray for the job. For example, you can specify that the job should be printed on pages from the Large Capacity Tray.

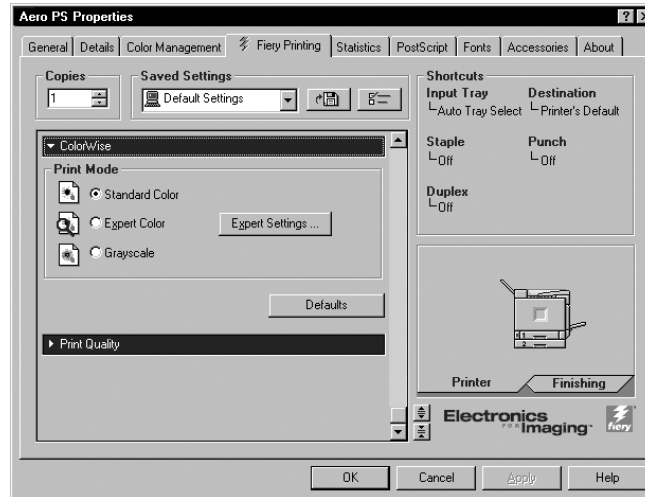
In the Media Type area, specify the type of media to use for the job.

For information on other print options, see Appendix A, "Print Options" .

1

1-4 Printing from Windows Computers

5. Click the ColorWise (PS) or Color Settings (PCL) print option bar.



Specify the color profile options for the job.

NOTE: Expert Settings is not supported for PCL drivers.

6. Specify the settings from the remaining print option bars.

These print options are specific to the Fiery 3850C and the printer. They override settings specified in Fiery 3850C Printer Setup, but can be overridden from Command WorkStation using the job's Properties dialog box, or WebSpooler using the job's Override Print Settings dialog box. For information about these options and overrides, see Appendix A, "Print Options" .

NOTE: Some options listed in the printer driver could also be set from an application (for example, collation). In these cases, use the driver option to perform the function, rather than setting it from the application. The application may not set up the file properly for printing on the Fiery 3850C and may also take longer to process.

7. Click OK.
8. From your application, choose Print.
Make sure the Fiery 3850C is selected as your current printer.
9. Click OK.

1

1-5 Printing from applications

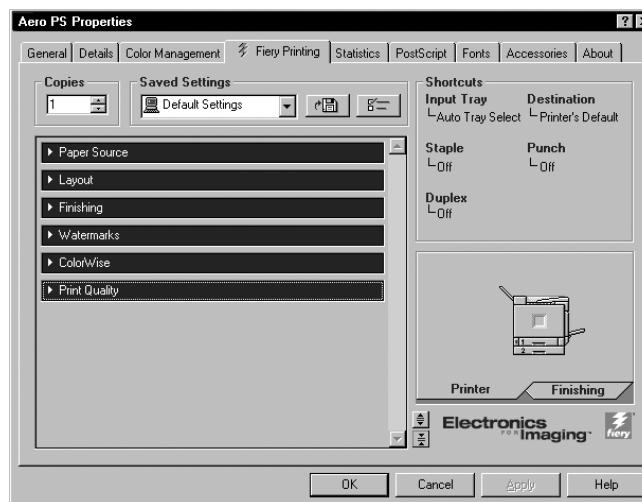
Using saved settings

Print option settings can be saved on your hard disk so you can easily load specifically configured settings for a particular job. Settings files can also be shared over a network, using the Import and Export features.

NOTE: Although the user interface differs slightly, the following procedures are the same for both PCL and PostScript printer drivers on Windows 9x/Me and Windows NT 4.0.

TO CREATE SAVED SETTINGS

1. Make sure that Default Settings appear in the Saved Settings pop-up menu.
2. Configure the options from the print option bars.



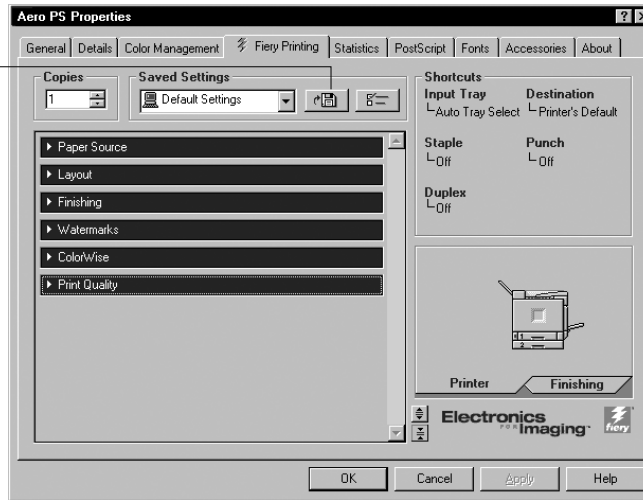
As soon as you change any settings, the Saved Settings menu displays Untitled instead of Default Settings.

1

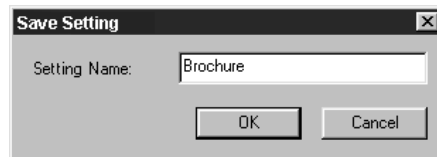
1-6 Printing from Windows Computers

3. Click the disk icon.

Click the disk icon



4. Using a maximum of 28 characters, enter a Settings Name and click OK.



The name appears in the Saved Settings pop-up menu.

TO LOAD SAVED SETTINGS

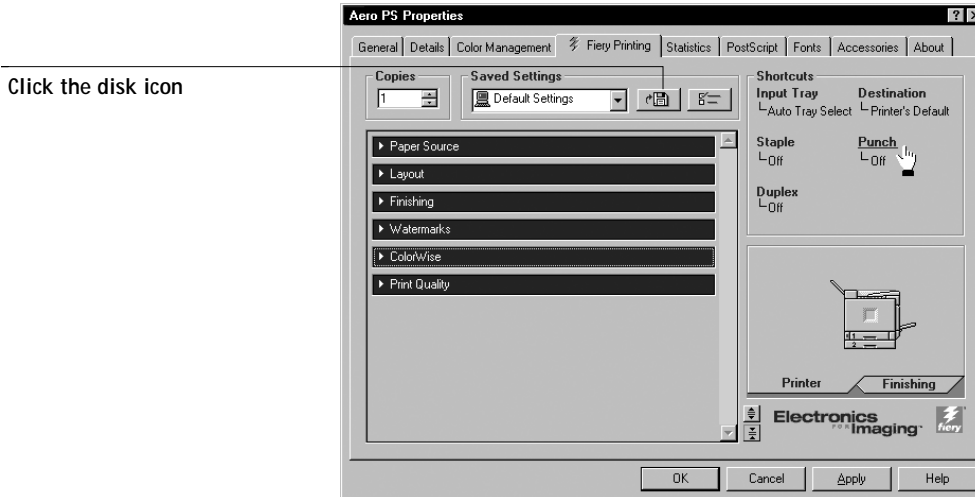
1. From the Fieri Printing tab, click the Saved Settings pop-up menu.
2. Choose the settings you want to use.

The printer driver is automatically configured with the saved settings.

1-7 | Printing from applications

TO DELETE SAVED SETTINGS

1. From the Fiery Printing tab, click the list icon.



2. Select the settings you wish to delete and click Delete.
3. Click Yes to confirm deletion, and click OK.

TO MODIFY SAVED SETTINGS

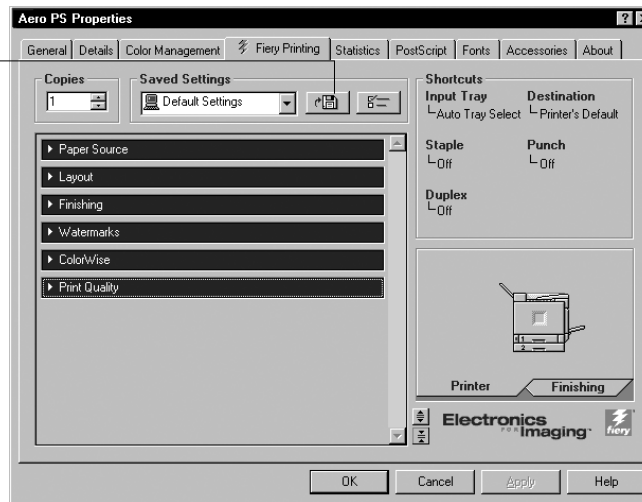
1. From the Fiery Printing tab, click the Saved Settings pop-up menu.
2. Choose the settings you want to modify.
The PostScript and PCL options are automatically configured with the saved settings.

1

1-8 Printing from Windows Computers

3. Configure the new settings from the print option bars, and click the disk icon.

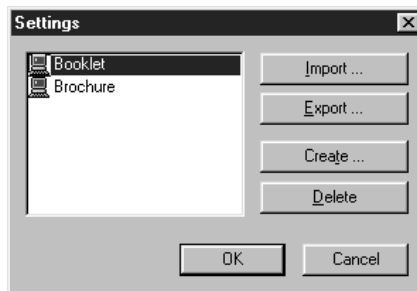
Click the disk icon



4. Click OK to save the modified settings.

To EXPORT SAVED SETTINGS

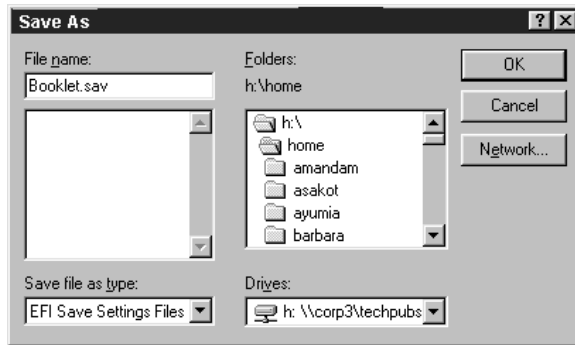
1. From the Fieri Printing tab, click the list icon.
2. Select the Saved Settings you want to export, and click Export.



1

1-9 Printing from applications

3. Browse to the location where you want to save the file, enter a file name, and click OK.

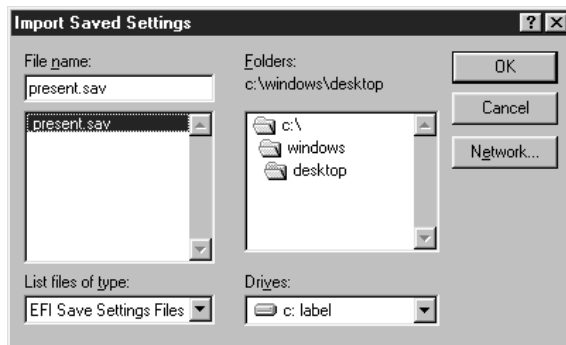


NOTE: The file name must include the .sav extension and can be up to eight characters long (not including the extension). The file name does not have to match the Settings Name.

4. Click OK in the Settings dialog box.

TO IMPORT SAVED SETTINGS

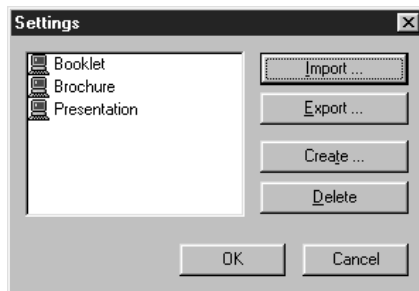
1. From the Fiery Printing tab, click the list icon.
2. Click the Import button.
3. Browse to the location of the saved settings file you wish to import.
4. Select the file, and click OK.



1

1-10 | Printing from Windows Computers

5. Click OK in the Settings dialog box.



NOTE: When you import saved settings, they appear in the Saved Settings menu under their Settings Name, not the file name. In the example above, the file present.sav (file name) was imported, but it appears in the Saved Settings menu as Presentation (Settings Name).

Using Shortcuts

The Shortcuts section of the driver interface displays the current settings for some of the most common print options. You can access and change these settings quickly and easily using the Shortcuts. You can also access some page layout and finishing options by right-clicking the image of the page directly below Shortcuts.

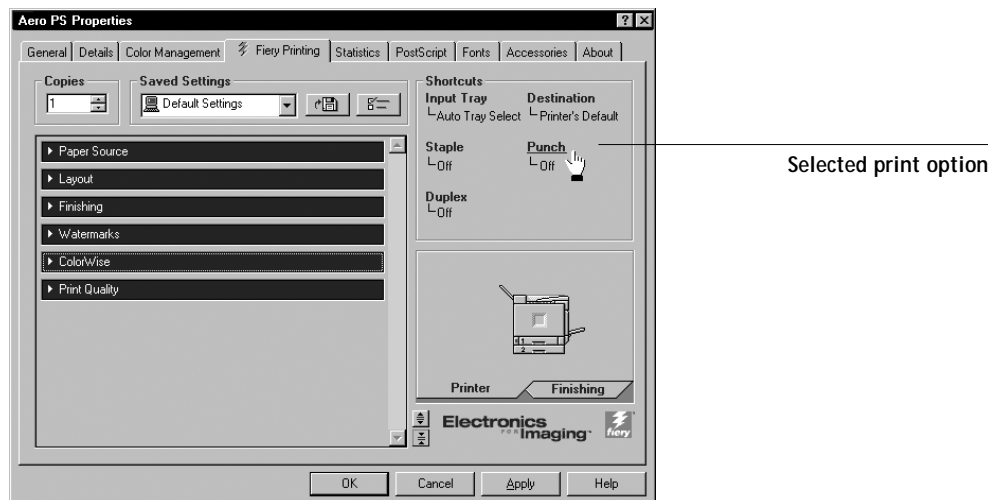
NOTE: You cannot modify the Shortcuts.

NOTE: Although the user interface differs slightly, the following procedures are the same for both PCL and PostScript printer drivers on Windows 9x/Me and Windows NT 4.0.

1-11 | Printing from applications

TO SET PRINT OPTIONS USING SHORTCUTS

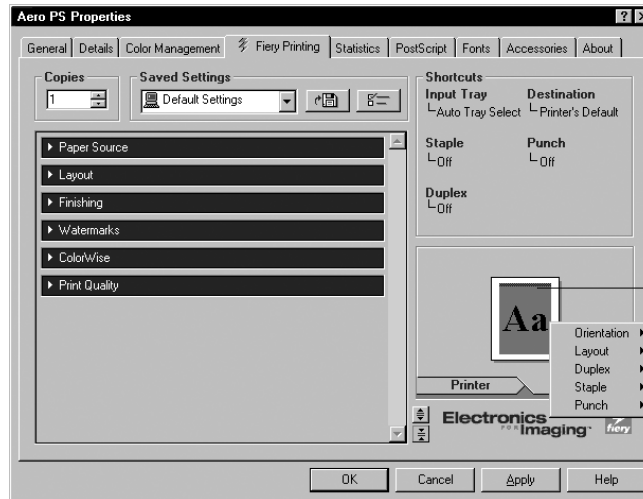
1. From the Fiery Printing tab, place your cursor over the print option you wish to set. When your cursor is directly over the print option name, the cursor turns into a hand and the option name is underlined; see the Orientation print option in the example below.



2. Click the selected print option and specify the appropriate settings. Alternatively, you can right-click the print option and specify the settings directly.
3. Click OK.

TO SET PRINT OPTIONS USING THE PAGE SHORTCUTS

1. From the Fiery Printing tab, click the Finishing tab, place your cursor over the page image, and right-click.



Right-click the page image

2. Specify the appropriate settings for the print options.
3. Click OK.

Setting options and printing from Windows NT 4.0

You can print from Windows NT 4.0 using the PCL printer driver or the Adobe PostScript printer driver, both of which are included on the User Software CD. See *Getting Started* for more information.

Once you have installed PCL printer driver and PDD file or the Adobe PostScript printer driver and the Fierly 3850C PPD file, you can specify print options. You can also change settings for a particular job when you print it to the Fierly 3850C.

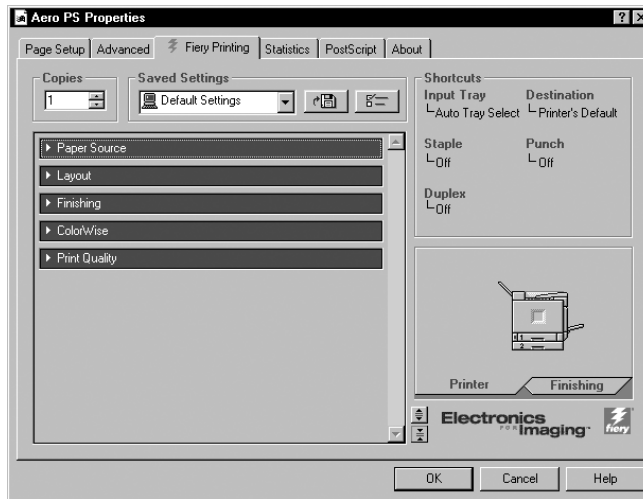
You can set options on a job-by-job basis (see below), or establish default settings for all jobs printed from your computer to the Fierly 3850C (see page 1-15).

NOTE: The following procedures use Windows NT Postscript illustrations. The interface may vary slightly depending on whether you are using the PostScript or PCL driver.

1-13 | Printing from applications

TO SET PRINT OPTIONS FOR A SPECIFIC WINDOWS NT 4.0 PRINT JOB USING THE PCL OR THE ADOBE POSTSCRIPT PRINTER DRIVER

1. Choose Print in your application.
2. Make sure the Fiery 3850C is selected as your printer and click Properties.
3. Click the Fiery Printing tab.

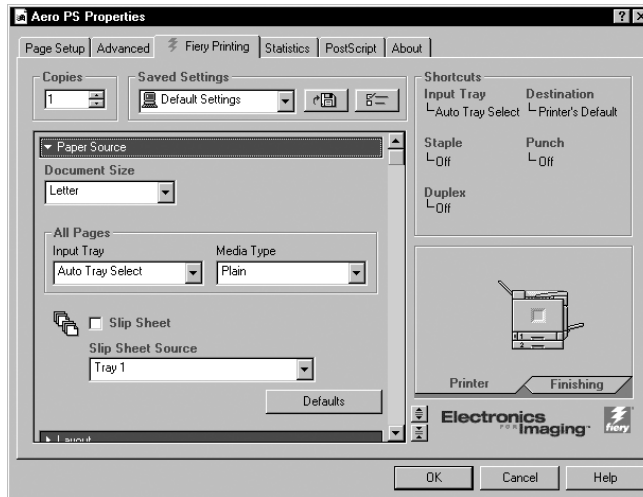


The Fiery Printing tab serves as the control center for all frequently used printing functions.

1

1-14 Printing from Windows Computers

4. Click the Paper Source print option bar and specify the appropriate settings for the print job.



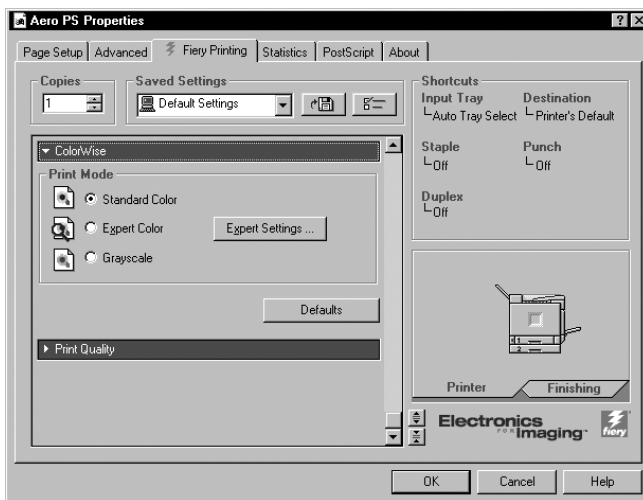
In the Document Size area, specify the page size for the job.

From the Input Tray menu, choose the paper source tray for the job. For example, you can specify that the job should be printed on pages from Large Capacity Tray.

In the Media Type area, specify the type of media to use for the job.

For information on other print options, see Appendix A, "Print Options" .

5. Click the ColorWise (PS) or Color Setting (PCL) print option bar.



Specify the color profile options for the job.

NOTE: Expert Settings is not supported for PCL drivers.

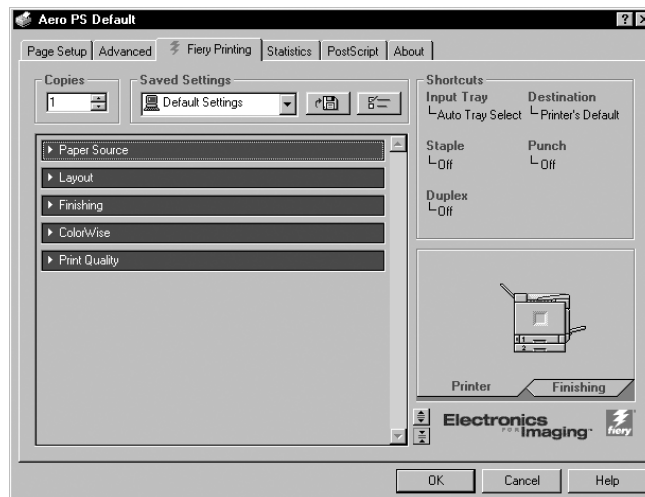
6. Specify the settings from the remaining print option bars.

These print options are specific to the Fiery 3850C and the printer. They override settings specified in Fiery 3850C Printer Setup, but can be overridden from Command WorkStation using the job's Properties dialog box, or from Fiery WebSpooler using the job's Override Print Settings dialog box. For information about these options and overrides, see Appendix A, "Print Options" .

7. Click OK and then click OK in the Print dialog box.

TO SET DEFAULT PRINT OPTIONS FOR ALL WINDOWS NT 4.0 JOBS USING THE PCL OR THE ADOBE POSTSCRIPT PRINTER DRIVER

1. Click the Start button, point to Settings, and click Printers.
2. Right-click to select the Fiery 3850C and choose Document Defaults.
3. Click the Fiery Printing tab.



4. Specify the default settings for your print jobs as described in the procedure starting on page 1-13.
5. Click OK.



Setting options and printing using the PostScript printer driver or the PCL driver on Windows 2000

You can print from Windows 2000 using the PCL printer driver or Microsoft printer driver, both of which are included with your Windows 2000 system, and the PostScript PPD included on the User Software CD. See *Getting Started* for more information.

Once you have installed the PCL printer driver and PDD file or the printer driver and the PPD file, you can specify print options.

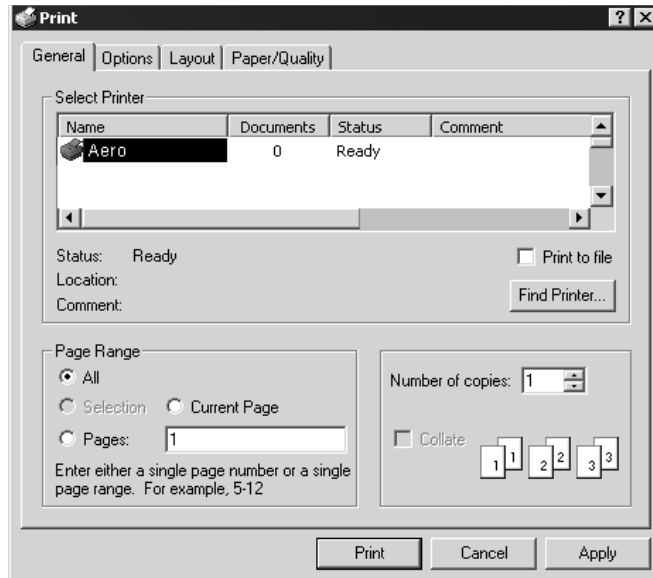
To print from Windows 2000 applications by connecting your computer to a print server via the network, one of the following is required: a NetWare server, a Windows server, or a UNIX server. For more information, see the *Configuration Guide*. To print from Windows 2000 applications without connecting to a print server, you can use SMB printing. For more information, see the *Getting Started*.

TO SET PRINT OPTIONS FOR A WINDOWS 2000 PRINT JOB USING THE MICROSOFT POSTSCRIPT PRINTER DRIVER

1. Choose Print in your application.

1-17 | Printing from applications

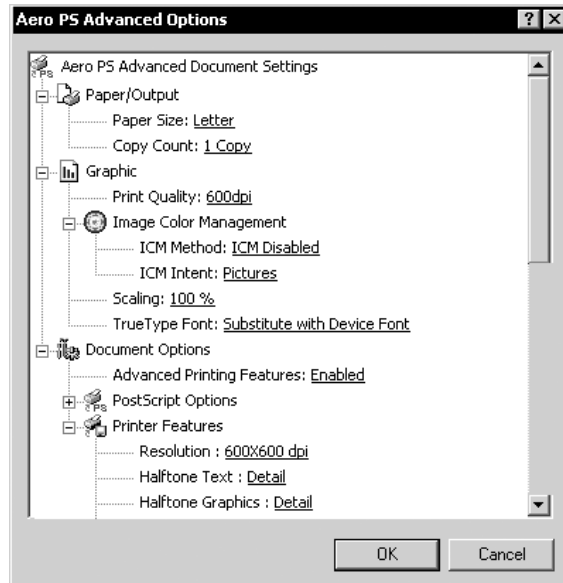
2. Click the Fiery 3850C icon.



NOTE: The dialog box that appears may vary, depending on the application you are printing from.

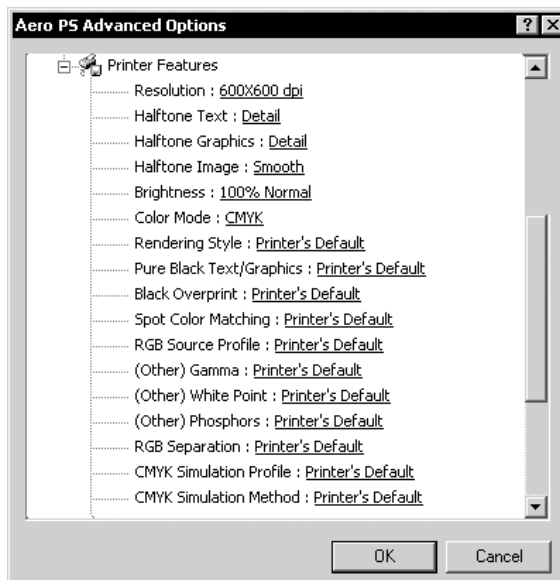
3. Select printing options from the General, Layout, and Paper/Quality tabs.

4. Click the Advanced button on the Layout or Paper/Quality tab to display the Advanced Options dialog box.



Select a setting from the Paper Size pop-up menu.

5. Scroll down to Printer Features, and select the appropriate settings for the print job.



These print options are specific to the Fiery 3850C and the printer. They override settings in Fiery 3850C Printer Setup, but can be changed in the Properties dialog box with the Command WorkStation, or in the Override Print Settings dialog box with Fiery WebSpooler. For information about these options and overrides, see Appendix A, “Print Options” .

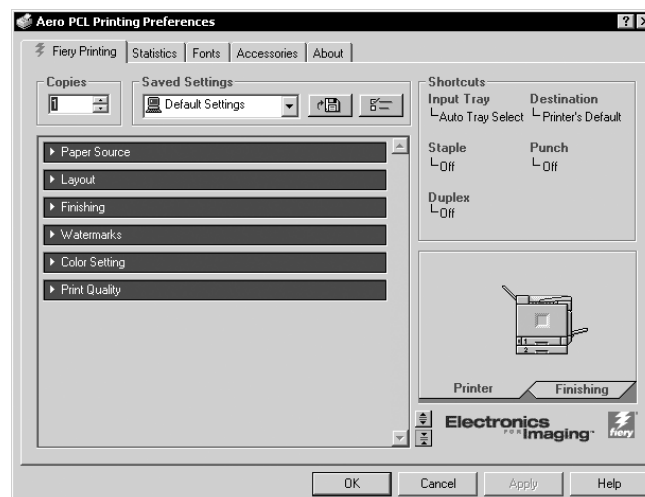
NOTE: As you select print options, incompatible print settings appear with a caution icon next to their names. If you specify incompatible print settings the Incompatible Print Settings dialog box appears. Follow the on-screen instructions to resolve the conflict.

6. Click OK.
7. Click Print.

The job prints with the specified settings.

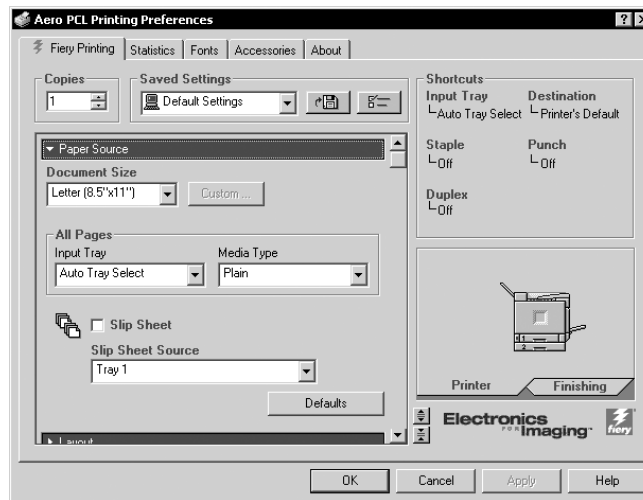
TO SET PRINT OPTIONS FOR A WINDOWS 2000 PRINT JOB USING THE PCL PRINTER DRIVER

1. Choose Print in your application.
2. Make sure the Fiery 3850C is selected as your printer and click Properties.
3. Click the Fiery Printing tab.



The Fiery Printing tab serves as the control center for all frequently used printing functions.

4. Click the Paper Source print option bar and specify the appropriate settings for the print job.



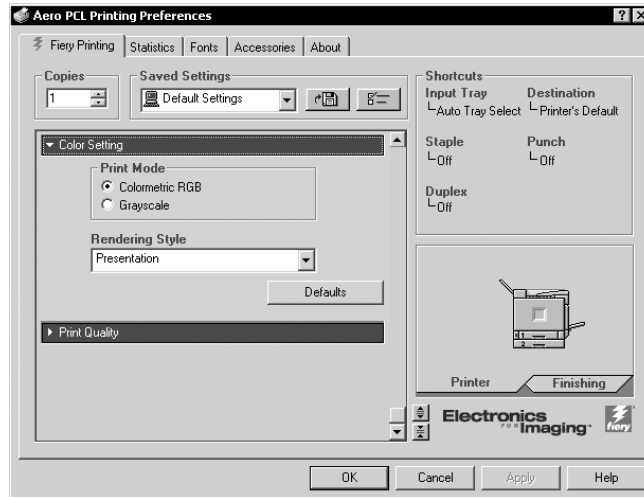
In the Page Size area, specify the page size for the job.

From the Paper Source menu, choose the paper source tray for the job. For example, you can specify that the job should be printed on pages from Auto Select Tray.

In the Media Type area, specify the type of media to use for the job.

For information on other print options, see Appendix A, "Print Options".

5. Click the Color Settings print option bar.



Specify the Print Mode and Rendering Style options for the job.

6. Specify the settings from the remaining print option bars.

These print options are specific to the Fiery 3850C and the printer. They override settings specified in Fiery 3850C Printer Setup, but can be overridden from Command WorkStation using the job's Properties dialog box, or from Fiery WebSpooler using the job's Override Print Settings dialog box. For information about these options and overrides, see Appendix A, "Print Options" .

7. Click OK and then click OK in the Print dialog box.

Working with custom page sizes in Windows 9x/Me

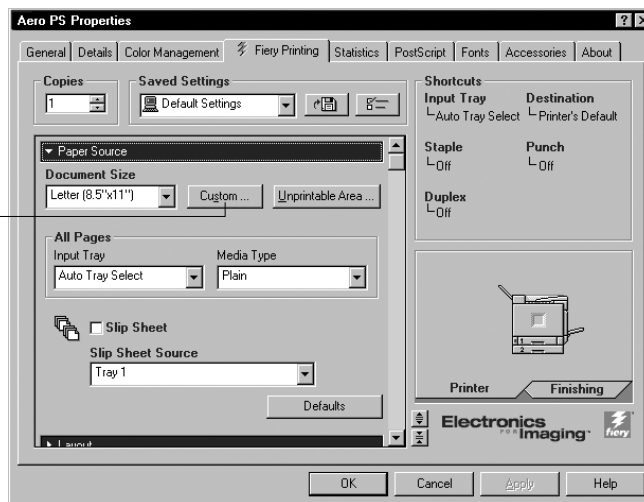
With custom page sizes, you can define the dimensions of the page. After you define a custom page size, you can use it from within an application without having to redefine it each time you print.

The printer must be set to print custom page sizes. See your printer service representative to enable custom page printing.

TO DEFINE A CUSTOM PAGE SIZE WITH THE WINDOWS 9X/ME POSTSCRIPT OR PCL PRINTER DRIVER

1. Click the Start button, point to Settings, and choose Printers.
2. Right-click the Fiery 3850C PS or PCL icon and choose Properties.
3. Click the Fiery Printing tab and click the Paper Source print option bar.

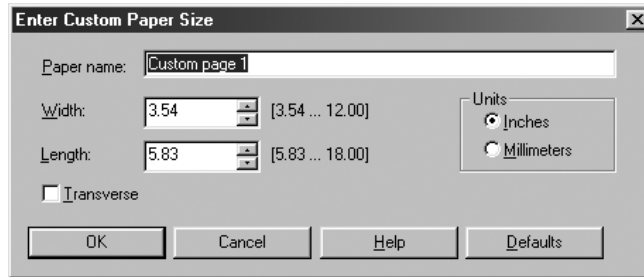
Click Custom



NOTE: For PostScript drivers, you must set the Input Tray to Bypass Tray before you click the Custom button. For PCL drivers, set the Input Tray to Bypass Tray and select Custom for the Document Size before you click the Custom button.

4. Click the Custom button.

The Enter Custom Paper Size dialog box appears.



5. Specify options to define the custom page size.

Width—Specify the width of the print job.

Length—Specify the length of the print job.

Units—Specify the unit of measurement for the print job.

Transverse—Check this option to swap Width and Length dimensions to correspond to the paper feed direction of the print job when printing from the PostScript driver.

Paper name—Enter a name for your custom page size. The new custom paper name appears in the Page Size pop-up menu.

NOTE: You cannot enter a name for the custom page size for PCL.

6. Click OK.
7. To define the unprintable area of the custom page, click the Unprintable Area button, enter the desired information, and click OK.

NOTE: The Unprintable Area feature is supported only on the PostScript printer driver.

8. Click OK.

TO EDIT A CUSTOM PAGE SIZE WITH THE WINDOWS 9X/ME POSTSCRIPT OR PCL PRINTER DRIVER

1. Click the Start button, point to Settings, and choose Printers.
2. Right-click the Fiery 3850C PS or PCL icon, and choose Properties.
3. Click the Fiery Printing tab, and click the Paper Source print option bar.

4. Select the custom page that you want to edit.
5. Click the Custom button.
The Enter Custom Paper Size dialog box appears.
6. Specify your edits, as described in step 5 on page 1-23, and click OK.

TO PRINT A CUSTOM PAGE SIZE WITH THE WINDOWS 9X/ME POSTSCRIPT OR PCL PRINTER DRIVER

1. Choose Print from your application.
2. Make sure the Fiery 3850C PS or PCL is selected as the printer, then click Properties.
3. Click the Fiery Printing tab, then click the Paper Source print option bar.
4. Select the custom page size from the Document Size menu.
5. Click OK and then click OK again to print the job.

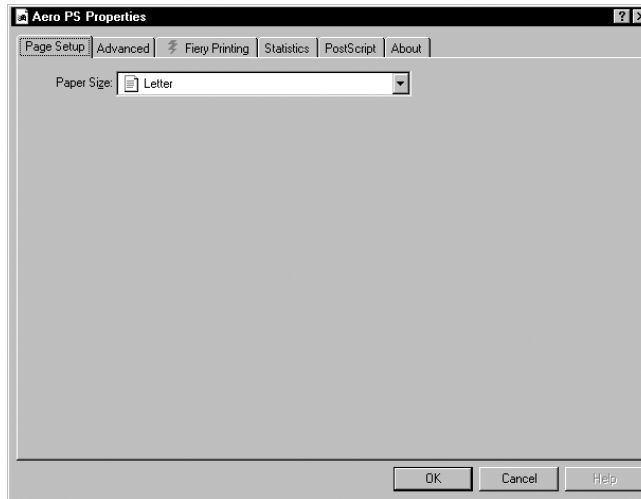
Working with custom page sizes in Windows NT 4.0

With custom page sizes, you can define the dimensions of the page. After you define a custom page size, you can use it from within an application without having to redefine it each time you print.

The printer must be set to print custom page sizes. See your printer service representative to enable custom page printing.

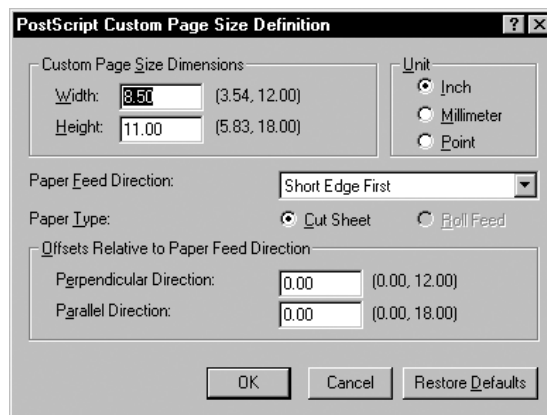
TO DEFINE A CUSTOM PAGE SIZE WITH THE WINDOWS NT 4.0 POSTSCRIPT PRINTER DRIVER

1. Click the Start button, point to Settings, and choose Printers.
2. Right-click the Fiery 3850C PS icon, and choose Document Defaults.
3. From the Page Setup tab, click the Paper Size menu.
Select to keep the setting and change it later.



4. Select PostScript Custom Page Size.

The PostScript Custom Page Size Definition dialog box appears.



5. Specify options to define the custom page size.

Custom Page Size Dimensions—Specify the width and height of the print job.

Unit—Specify the unit of measurement for the print job.

Paper Feed Direction—Specify the paper feed direction of the print job.

Paper Type—Specify the type of paper for the print job.

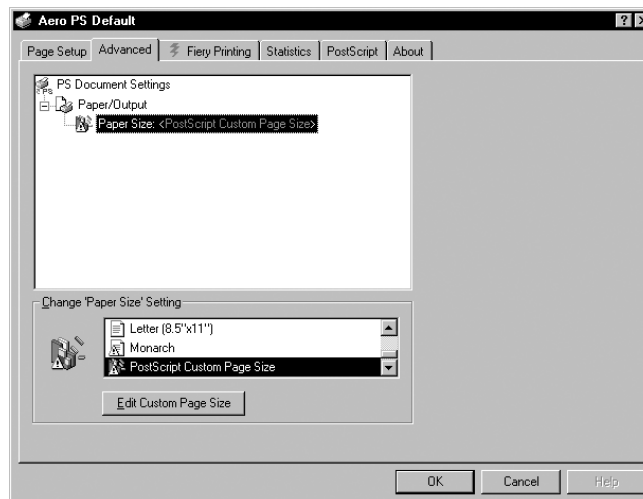
Offsets Relative to Paper Feed Direction—Specify the offsets (margins) of the print job relative to the paper feed direction.

1-26 | Printing from Windows Computers

6. Select the appropriate Paper Source.
7. Click OK.

TO EDIT A CUSTOM PAGE SIZE WITH THE WINDOWS NT 4.0 POSTSCRIPT PRINTER DRIVER

1. Click the Start button, point to Settings, and choose Printers.
2. Right-click the Fiery 3850C PS icon and choose Document Defaults.
3. Click the Advanced tab.



4. For Paper Size, select PostScript Custom Page Size.
The PostScript Custom Page Size Definition dialog box automatically opens. If it does not, click the Edit Custom Page Size button.
5. Specify your edits, as described in step 5 on page 1-25, and click OK.

TO PRINT A CUSTOM PAGE SIZE WITH THE WINDOWS NT 4.0 POSTSCRIPT PRINTER DRIVER

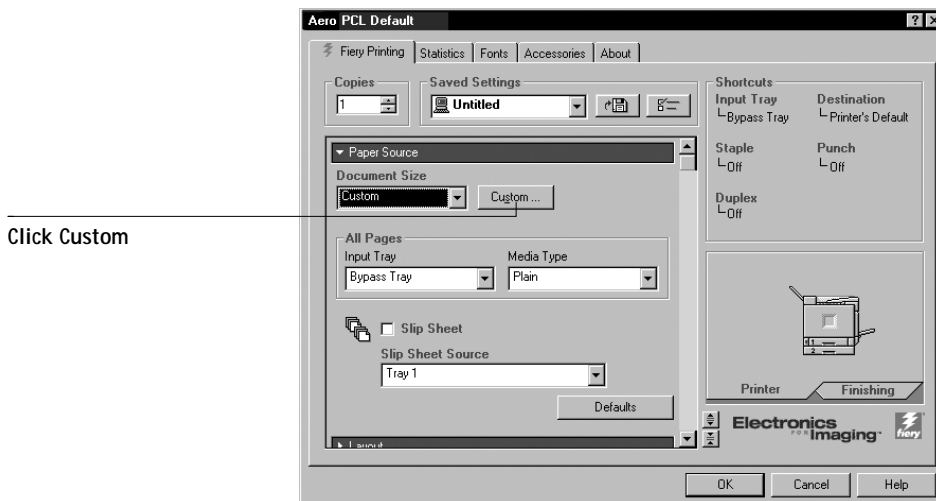
1. Choose Print from your application.

1-27 | Printing from applications

2. Make sure the Fiery 3850C PS is selected as the printer, and click Properties.
3. Select PostScript Custom Page from the Document Size menu.
4. Click OK and click OK again to print the job.

TO DEFINE A CUSTOM PAGE SIZE WITH THE WINDOWS NT 4.0 PCL PRINTER DRIVER

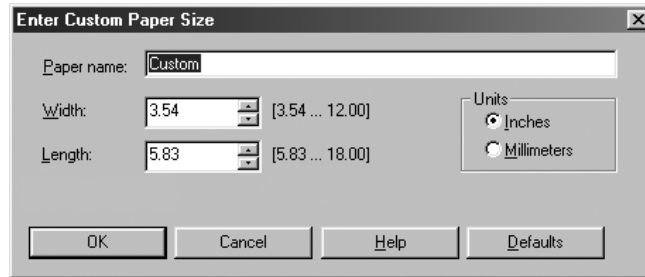
1. Click the Start button, point to Settings, and choose Printers.
2. Right-click the Fiery 3850C PCL icon and choose Properties.
3. Click the Fiery Printing tab and click the Paper Source print option bar.



NOTE: Set the Input Tray to Bypass Tray and select Custom for the Document Size before you click the Custom button.

4. Click the Custom button.

The Enter Custom Paper Size dialog box appears.



5. Specify options to define the custom page size.
 - Width—Specify the width of the print job.
 - Length—Specify the length of the print job.
 - Units—Specify the unit of measurement for the print job.
6. Click OK.
7. Click OK again.

TO EDIT A CUSTOM PAGE SIZE WITH THE WINDOWS NT 4.0 PCL PRINTER DRIVER

1. Click the Start button, point to Settings, and choose Printers.
2. Right-click the Fiery 3850C PCL icon, and choose Properties.
3. Click the Fiery Printing tab, and click the Paper Source print option bar.
4. Select Custom from the Document Size menu.
5. Click the Custom button.

The Enter Custom Paper Size dialog box appears.
6. Specify your edits, as described in step 5 in the previous section, and click OK.

TO PRINT A CUSTOM PAGE SIZE WITH THE WINDOWS NT 4.0 PCL PRINTER DRIVER

1. Choose Print from your application.

2. Make sure the Fiery 3850C PCL is selected as the printer, then click Properties.
3. Click the Fiery Printing tab, then click the Paper Source print option bar.
4. Select the custom page size from the Document Size menu.
5. Click OK and then click OK again to print the job.

Working with custom page sizes in Windows 2000

With custom page sizes, you can define the dimensions of the page. After you define a custom page size, you can use it from an application without having to redefine it each time you print.

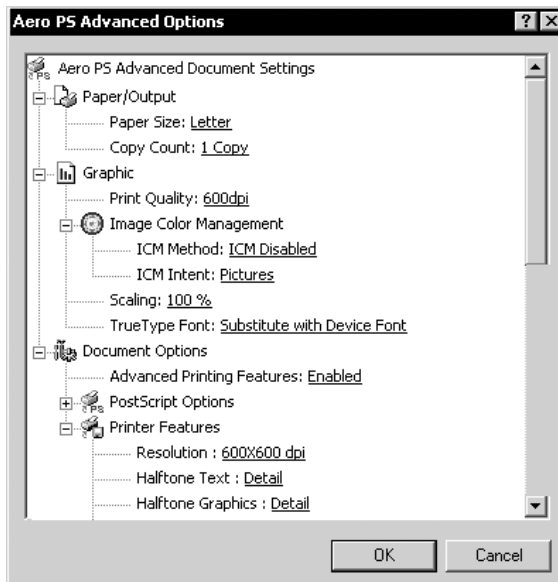
The printer must be set to print custom page sizes. See your printer service representative to enable custom page printing.

TO DEFINE A CUSTOM PAGE SIZE WITH THE WINDOWS 2000 POSTSCRIPT PRINTER DRIVER

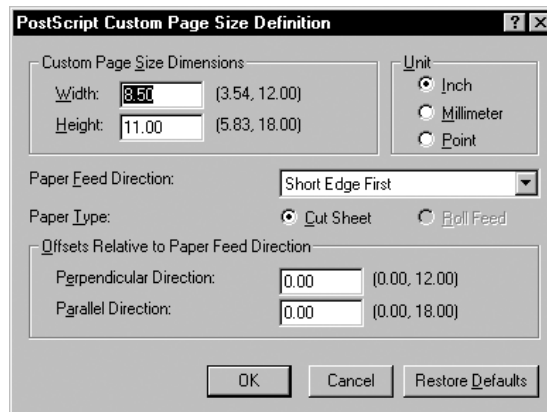
1. Click the Start button, point to Settings, and choose Printers.
2. Right-click the Fiery 3850C PS icon, and choose Printing Preferences.

1-30 Printing from Windows Computers

3. Click the Advanced button.



4. Select PostScript Custom Page Size from the Paper Size pop-up menu. The PostScript Custom Page Size Definition dialog box appears.



5. Specify options to define the custom page size.

Custom Page Size Dimensions—Specify the width and height of the print job.

Unit—Specify the unit of measurement for the print job.

Paper Feed Direction—Specify the paper feed direction of the print job.

1-31 | Printing from applications

Paper Type—Specify the type of paper for the print job.

Offsets Relative to Paper Feed Direction—Specify the offsets (margins) of the print job relative to the paper feed direction.

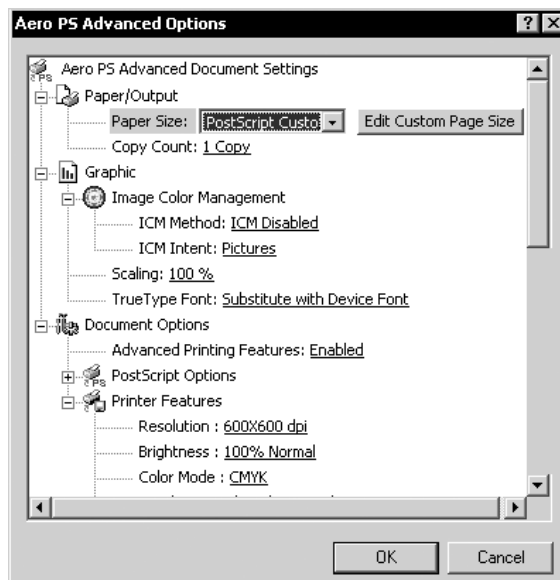
6. Click OK to close the Advanced Options dialog box.
7. Click OK to close the Printing Preferences dialog box.

You can now specify the custom page size from an application.

TO EDIT A CUSTOM PAGE SIZE WITH THE WINDOWS 2000 POSTSCRIPT PRINTER DRIVER

1. Click the Start button, point to Settings, and choose Printers.
2. Right-click the Fiery 3850C PS icon, and choose Printing Preferences.
3. Click the Advanced button.
4. Select PostScript Custom Page Size from the Paper Size pop-up menu.

The PostScript Custom Page Size Definition dialog box automatically opens. If it does not, click the Edit Custom Page Size button.



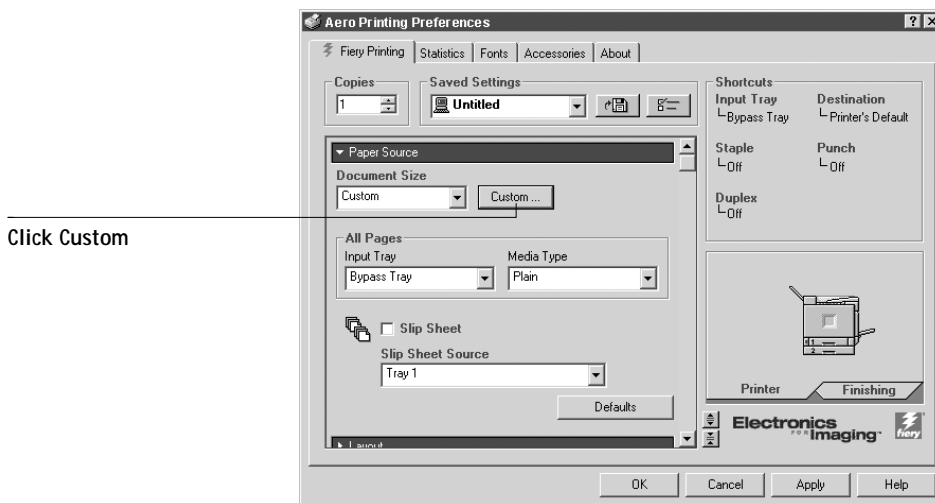
5. Specify your edits, as described in step 5 on page page 1-30 and click OK.

TO PRINT A CUSTOM PAGE SIZE WITH THE WINDOWS 2000 POSTSCRIPT PRINTER DRIVER

1. Choose Print from your application.
2. Right-click the Fiery 3850C PS icon, and choose Printing Preferences.
3. Click the Advanced button.
4. Select PostScript Custom Page Size from the Paper Size pop-up menu.
5. Verify the custom page size settings and click OK.
6. Click OK to close the Advanced Options dialog box.
7. Click OK to close the Printing Preferences dialog box.

TO DEFINE A CUSTOM PAGE SIZE WITH THE WINDOWS 2000 PCL PRINTER DRIVER

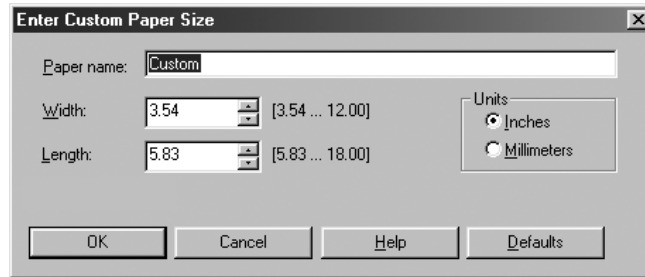
1. Click the Start button, point to Settings, and choose Printers.
2. Right-click the Fiery 3850C PCL icon and choose Properties.
3. Click the Fiery Printing tab and click the Paper Source print option bar.



NOTE: Set the Input Tray to Bypass Tray and select Custom for the Document Size before you click the Custom button.

4. Click the Custom button.

The Enter Custom Paper Size dialog box appears.



5. Specify options to define the custom page size.
 - Width—Specify the width of the print job.
 - Length—Specify the length of the print job.
 - Units—Specify the unit of measurement for the print job.
6. Click OK then click OK again to print the job.

TO EDIT A CUSTOM PAGE SIZE WITH THE WINDOWS 2000 PCL PRINTER DRIVER

1. Click the Start button, point to Settings, and choose Printers.
2. Right-click the Fiery 3850C PCL icon, and choose Properties.
3. Click the Fiery Printing tab, and click the Paper Source print option bar.
4. Select Custom from the Document Size menu.
5. Click the Custom button.

The Enter Custom Paper Size dialog box appears.
6. Specify your edits, as described in step 5 in the previous section, and click OK.

TO PRINT A CUSTOM PAGE SIZE WITH THE WINDOWS 2000 PCL PRINTER DRIVER

1. Choose Print from your application.

2. Make sure the Fiery 3850C PCL is selected as the printer, then click Properties.
3. Click the Fiery Printing tab, then click the Paper Source print option bar.
4. Select the custom page size from the Document Size menu.
5. Click OK and then click OK again to print the job.

Printing to the parallel port

The Fiery 3850C has a parallel port that enables you to print most files directly from a Windows computer if your network administrator has connected the Windows computer's parallel port to the Fiery 3850C parallel port.

TO PRINT FILES TO THE PARALLEL PORT

1. Make sure the parallel port is enabled on the Fiery 3850C.
Check with your site administrator or operator to see whether printing to the parallel port is enabled. See *Getting Started* for information on setting up parallel port printing on your Windows computer.
2. Select the printer port that is connected to the Fiery 3850C parallel port.
Select one of the local ports: LPT1, LPT2, or LPT3. For instructions, see your Windows documentation.
3. Print from within your application.

Saving files to print at a remote location

If you do not have the Fiery 3850C and are preparing files to take to a service bureau or other location, print the final files to the File port (as opposed to one of the local ports). For instructions on printing to the File port, see your Windows documentation.

2

2-1 | Printing from applications

Chapter 2: Printing from Mac OS Computers

You can print to the Fiery 3850C just as you would print to any other printer from any application software. Select the Fiery 3850C as the current printer in the Chooser, and print the file from within the application.

Another way to print from a Mac OS computer is to download PostScript, Encapsulated PostScript (EPS), or Portable Document Format (PDF) files using WebDownloader. For details on using WebDownloader, see Chapter 5.

Printing from applications

Before you can print to the Fiery 3850C from applications, you must select the Fiery 3850C in the Chooser. Then, using the Adobe PostScript printer driver and the correct PostScript Printer Description file (PPD), you can control many Fiery 3850C printing features by specifying job settings from print dialog boxes.

Selecting the Fiery 3850C in the Chooser

Before you print a job, make sure the Fiery 3850C is the currently selected printer.

NOTE: For information about setting up the Fiery 3850C in the Chooser, see *Getting Started*.

TO SELECT THE FIERY 3850C AS THE CURRENT PRINTER

1. Make sure the Fiery 3850C is connected to the network and turned on.
2. Choose Chooser from the Apple menu.
3. Click the AdobePS icon to select it.

NOTE: Make sure AppleTalk is set to Active.

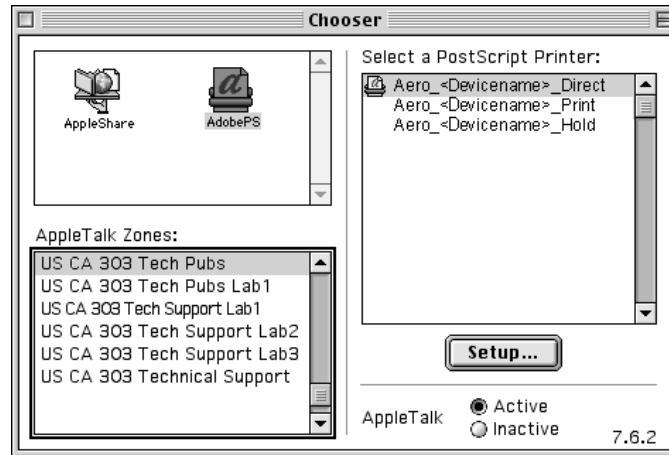
4. If your network is divided into zones, select the zone in which the Fiery 3850C is located.

2

2-2 Printing from Mac OS Computers

5. Select the Fiery 3850C by <Server Name>_<Device Name>_<Queue Name> from the “Select a PostScript Printer” list.

The names of all supported printers in the zone appear in the scroll list on the right.



NOTE: If your system administrator has not enabled the connection to the Print queue or the Direct connection, the corresponding names will *not* appear in this list. For example, if your site has an operator who controls the flow of print jobs from the Command WorkStation, you may be able to print only to the Hold queue. See the *Configuration Guide* for more information on enabling printer connections.

6. Close the Chooser window.

The Fiery 3850C remains selected as the current printer until you choose a new printer in the Chooser.

2

2-3 | Printing from applications

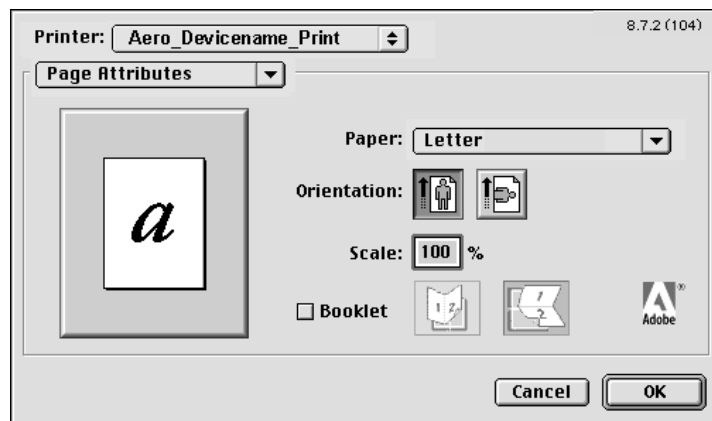
Setting options and printing from Mac OS computers

In Mac OS applications, print options are set from both the Page Setup dialog box and the Print dialog box. For details on specific print options, see Appendix A, “Print Options” .

NOTE: Some default print options are set by the administrator during Setup. Check with the administrator or the operator for information on the current server default settings.

TO SET PRINT OPTIONS AND PRINT WITH THE ADOBEPS PRINTER DRIVER

1. Open a file and choose Page Setup from the application's File menu.
2. In the dialog box that appears, specify the Page Attributes settings for your print job. Make sure to select the Fiery 3850C in the “Printer” menu.



NOTE: Page Setup dialog boxes vary across applications.

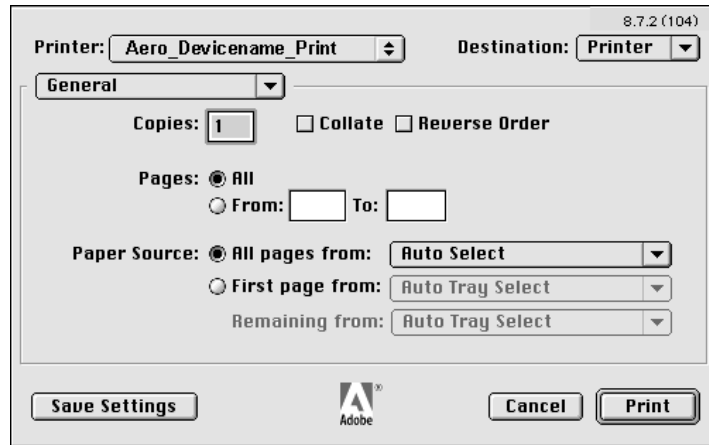
3. Click OK.

2

2-4 | Printing from Mac OS Computers

4. Choose Print from the application's File menu.

Make sure the Fiery 3850C is selected as your printer and specify settings for the print options displayed.



NOTE: Print dialog boxes vary across applications.

From the Paper Source pop-up menu, choose the paper tray for the job. For example, you can specify that the job should be printed on pages. The Paper Source selection is valid for the current job only.

NOTE: If paper loaded in the selected tray is a different size, orientation, and/or media type than that of the job you are sending, the Fiery 3850C displays an error message and the job will not print. You should then load the correct paper in the selected tray or cancel the job.

2

2-5 Printing from applications

5. Go to Fiery Job Notes.

Choose Fiery Job Notes from the pop-up menu

The screenshot shows a dialog box titled "Fiery Job Notes" with a version number "8.7.2 (104)" in the top right corner. At the top, there are two dropdown menus: "Printer:" set to "Aero_Print" and "Destination:" set to "Printer". Below these is a dropdown menu for "Fiery Job Notes". The main area of the dialog contains three text input fields: "User ID", "Secure Print Password", and "User Code". To the right of these fields is a vertical scrollbar. At the bottom of the dialog, there are three buttons: "Save Settings", "Cancel", and "Print". The Adobe logo is centered at the bottom.

Enter a User ID for your print job or a Secure Print Password to enter at the printer LCD if you are printing a secure print job.

For more information on entering User Codes, see Chapter 4.

6. Go to Printer Specific Options and specify the appropriate settings for your print job.

Choose Printer Specific Options from the pop-up menu

The screenshot shows a dialog box titled "Printer Specific Options" with a version number "8.7.2 (104)" in the top right corner. At the top, there are two dropdown menus: "Printer:" set to "Aero_Print" and "Destination:" set to "Printer". Below these is a dropdown menu for "Printer Specific Options". The main area of the dialog contains several settings, each with a dropdown menu: "Resolution:" set to "600X600 dpi", "Halftone Text:" set to "Detail", "Halftone Graphics:" set to "Detail", "Halftone Image:" set to "Smooth", "Brightness:" set to "100% Normal", "Color Mode:" set to "CMYK", "Rendering Style:" set to "Printer's Default", and "Pure Black Text/Graphics:" set to "Printer's Default". To the right of these settings is a vertical scrollbar. At the bottom of the dialog, there are three buttons: "Save Settings", "Cancel", and "Print". The Adobe logo is centered at the bottom.

These print options are specific to the Fiery 3850C and the printer (you may need to scroll to see all the options). They override settings in Fiery 3850C Printer Setup, but can be overridden from Fiery WebSpooler using the job's Override Print Settings dialog box. For information about these options and overrides, see Appendix A, "Print Options".

2

2-6 Printing from Mac OS Computers

NOTE: Some PPD options can also be set from an application (for example, Reverse Order printing or collation). In these cases, use the PPD option to perform the function, rather than setting it from the application. The application may not set up the file properly for printing on the Fiery 3850C and may also take longer to process.

7. If you want to make the new settings the default settings, click Save Settings.
8. Click Print.

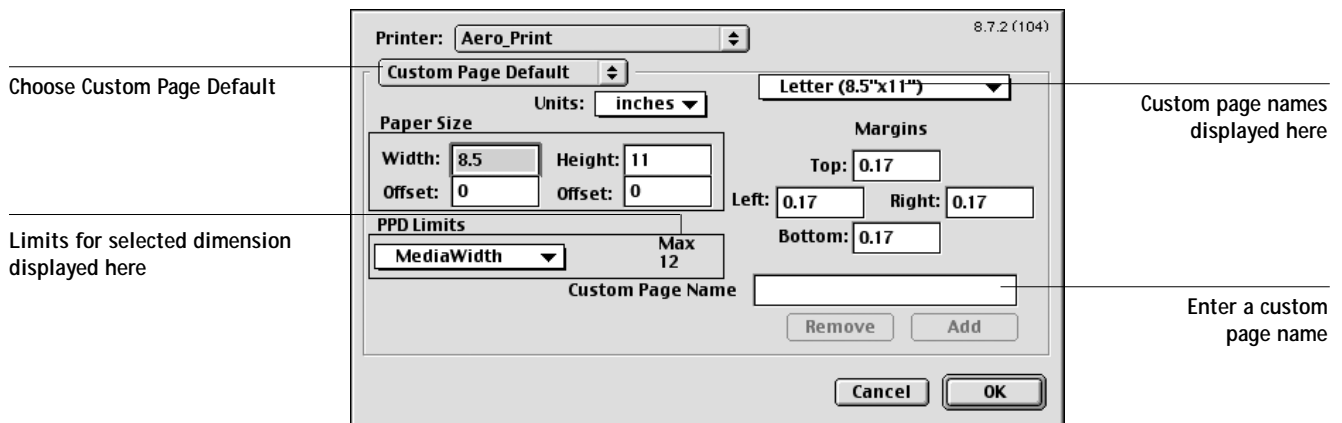
NOTE: The Fiery 3850C does not support printing the Cover Page from the AdobePS printer driver.

Defining custom page sizes

With custom page sizes, you define the page dimensions and margins. After you define a custom page size, you can use it from within an application, without having redefine it each time you print.

TO DEFINE A CUSTOM PAGE SIZE

1. Choose Page Setup from the application's File menu.
2. For Paper, choose Custom.
3. From the pull-down menu, choose Custom Page Default.



4. Enter the page dimensions and margins.
You can view the minimum and maximum sizes by using the pull-down menu under PPD Limits.

2

2-7 | Printing from applications

If you enter invalid sizes, an error message appears. Click Cancel and enter sizes specified within the PPD Limits.

5. To save this custom page size, enter a name for it and click Add.

Saved custom page sizes appear in the menu of page sizes at the top right of the dialog box. To remove a saved custom page size, select it from the menu and click Remove.

6. Click OK.

TO PRINT A CUSTOM PAGE SIZE

1. Choose Page Setup from the application's File menu
2. For Paper, choose Custom.
3. Click OK.
4. Choose Print from your application's file menu.
Specify your printing options.
5. Click Print.

3

3-1 Printing to the Fiery 3850C

Chapter 3: Printing from UNIX Workstations

You can print to the Fiery 3850C directly from UNIX workstations. Jobs printed to the Fiery 3850C are sent to the xjprint or xjhold queue and can be manipulated from the Command WorkStation or from Windows and Mac OS computers on the network using Fiery WebSpooler.

NOTE: If you print to the xjhold queue, an operator must intervene from the Command WorkStation or Fiery WebSpooler for the job to print; jobs sent to the xjprint queue are spooled to disk and held.

The queue name and Fiery 3850C printer name are determined by your system administrator. Contact your system administrator for the names of your queues.

For information about setting up printing from TCP/IP, see your UNIX system documentation.

Printing to the Fiery 3850C

You can use UNIX commands to print PostScript and text files to the Fiery 3850C. In general, use basic print commands (lpr, lpq, lprm) to send print jobs to the Fiery 3850C. See UNIX manual pages or other documentation for information about UNIX commands.

TO PRINT FROM UNIX

- On a system running SunOS 4.1.x or another BSD-based variant, use the lpr command to send a job to the Fiery 3850C as follows:

```
lpr <-Pprinter> <-#copies> <filename>
```

For example, if the xjprint queue of your Fiery 3850C is named print_Server, your file is named Sample, and you want to print two copies, type:

```
lpr -Pprint_Server -#2 Sample
```


3

3-2 | Printing from UNIX Workstations

- On a system running Solaris 2.x or any System V implementation of UNIX, use the `lp` command to send a job to the Fiery 3850C as follows:

```
lp -d <printername> {-n <copies>} <filename>
```

For example, if the xjprint queue of your Fiery 3850C is named `print_Server`, your file is named `Sample`, and you want to print two copies, type:

```
lp -d print_Server -n 2 Sample
```

TO DISPLAY A LIST OF JOBS IN THE QUEUE

- On a system running SunOS 4.1.x or another BSD-based variant, use the `lpq` command to see printer jobs in the queue as follows:

```
lpq <-Pprinter>
```

For example, if the xjprint queue of your Fiery 3850C is named `print_Server`, type:

```
lpq -Pprint_Server
```

Your workstation displays the contents of the queue.

- On a system running Solaris 2.x or any System V implementation of UNIX, use the `lpstat` command to see printer jobs in the queue as follows:

```
lpstat -o <printername>
```

For example, if the xjprint queue of your Fiery 3850C is named `print_Server`, type:

```
lpstat -o print_Server
```

Your workstation displays the contents of the queue.

TO REMOVE JOBS FROM THE QUEUE

NOTE: Unless you log in as the root user, you can remove only your own jobs.

- On a system running SunOS 4.1.x or another BSD-based variant, use the `lprm` command to remove jobs from the queue as follows.

```
lprm <-Pprinter> <job #...>
```

You can use the `lpq` command to check the job number.

For example, to remove job number 123 from the `xjprint` queue of your Fiery 3850C named `print_Server`, type:

```
lprm -Pprint_Server 123
```

The `lprm` command reports the names of any files it removes.

- On a system running Solaris 2.x or any System V implementation of UNIX, use the `cancel` command to remove jobs from the queue.

```
cancel <printername> <job ID>
```

For example, to remove job number 123 from the `xjprint` queue of your Fiery 3850C named `print_Server`, type:

```
cancel print_Server 123
```


4

4-1 | Printing simulations

Chapter 4: Special Features

This chapter describes some of the special features supported by the Fiery 3850C including:

- Printing simulations
- Printing duplex pages
- Check and Print Jobs
- Secured Print Jobs
- Entering User Codes

Printing simulations

You can use the Fiery 3850C to proof offset press jobs or to simulate the output of other print devices by specifying settings for the CMYK Simulation Profile (from the printer driver) print option. This option affects CMYK data only.

The Fiery 3850C provides CMYK Simulation targets for the major international press standards: SWOP, DIC, and Euroscale. You can also create, save, and import custom simulation profiles using ColorWise Pro Tools (see the *Color Guide*).

- The Fiery 3850C provides CMYK Simulation targets for the major international press standards: SWOP, DIC, and Euroscale. When printing simulations on the Fiery 3850C, choose the CMYK Simulation Profile setting corresponding to the press standard for which the CMYK data was prepared, or choose a custom simulation profile.
- To simulate the color of a copy made from the printer glass, choose the Match Copy setting. This setting bypasses Fiery 3850C calibration.

4

4-2 Special Features

Printing duplex pages

You can use the Fiery 3850C to print 2-sided (duplex) pages.

TO PRINT DUPLEX PAGES

1. When specifying print options, set Duplex to the desired setting.
prints both sides using the same long edge.
prints using the same short edge.
2. Set other options and click OK.
3. Click Print.

Check and Print Jobs

Use this option to specify if you want to print and proof a copy of your print job before printing multiple copies of the job.

TO SPECIFY A CHECK AND PRINT JOB ON A WINDOWS COMPUTER

1. Choose Print from the application's File menu.
The print dialog box appears.
2. Select the Fiery 3850C and click Properties (Windows 9x/Me), Document Defaults (Windows NT), or Printing Preferences (Windows 2000/XP).
NOTE: The Check and Print Feature does not work with Windows 2000/XP PostScript printer drivers.
3. Click the Fiery printing tab.
4. Under the Finishing print option bar, select Check and Print under the Job Type print option.
5. Select other print options and click OK
6. Click Print
A copy of your job will print at the Fiery 3850C.
7. Proof and verify your print job.

4

4-3 | Check and Print Jobs

If you want to print out or cancel the remaining copies at the control panel, see the “To retrieve Check and Print job copies at the control panel” on page 4-3.

TO SPECIFY A CHECK AND PRINT JOB ON A MAC COMPUTER

1. Choose Print from the application's File menu.
2. Select Printer Specific options from the pull-down menu.
3. Under the Job Type print option, select Check and Print.
4. Click Print.

TO RETRIEVE CHECK AND PRINT JOB COPIES AT THE CONTROL PANEL

1. From the control panel, select the Menu button and select Check and Print.
2. Press the Enter button.
Verify the user name and the name of the document displays.
3. Press the Enter button.
Verify the number of copies remaining.

NOTE: You can change the number of copies using the arrow keys. If you want to cancel the job, select 0.

4. Press the Enter button to print out the remaining copies.

4

4-4 | Special Features

Secured Print Jobs

This option is used to specify if you want to enter a specific user name and password to make your print job private.

TO SPECIFY A SECURE PRINT JOB ON A WINDOWS COMPUTER

1. Choose Print from the application's File menu.
The print dialog box appears.
2. Select the Fiery 3850C and click Properties (Windows 9x/Me), Document Defaults (Windows NT) or Printing Preferences (Windows 2000/XP).
3. Click the Fiery printing tab.
4. Under the Finishing print option bar, select Secure Print under the Job Type print option.
5. Enter a User ID and a Secure Print Password to enter at the control panel.

NOTE: If you do not enter the User ID and Password, the job will be lost and you will not be able to retrieve the job.

NOTE: The User ID must not exceed 8 characters and the Secure Print Password must be 4 digits.

6. Set other print options and click OK.
7. Click Print.
Your job will not print until you retrieve it at the Fiery 3850C. See the procedure, "To retrieve a secure print job from the control panel" on page 4-5 on how to retrieve secured print jobs.

TO SPECIFY A SECURE PRINT JOB ON A MAC OS COMPUTER

1. Choose Print from the application's File menu.
2. Select Printer Specific options from the pull-down menu.

4

4-5 Entering User Codes

3. Under the Job Type print option, select Secure Print.
4. Select Fiery Job Notes from the pull-down menu.
5. Enter a User ID and a Secure Print Password.

NOTE: The User ID must not exceed 8 characters and the Secure Print Password must be 4 digits.

TO RETRIEVE A SECURE PRINT JOB FROM THE CONTROL PANEL

1. From the control panel, select the Menu button and select Secure Print.
2. Press the Enter button.
Verify the User ID and name of document displays.
3. Press the Enter button.
Scroll by using the left/right buttons and enter the password digits by using the arrow buttons.
NOTE: If you enter the wrong password, you will be prompted to retry.
4. Press Enter and use the arrow buttons to choose to print or delete your secure print job.

Entering User Codes

A User Code can be entered by using the Statistics tab in the Windows printer driver or in Fiery Job Notes in the Mac printer driver. A User Code can be assigned optionally to each print job. A tally of all jobs printed using a User Code can be viewed or exported.

To view or export a tally of all jobs printing using a User Code, see your printer's documentation.

NOTE: Supported tabs may vary. The following procedure uses Windows 98 windows with any Windows Me and/or Windows NT/2000/XP differences noted.

4

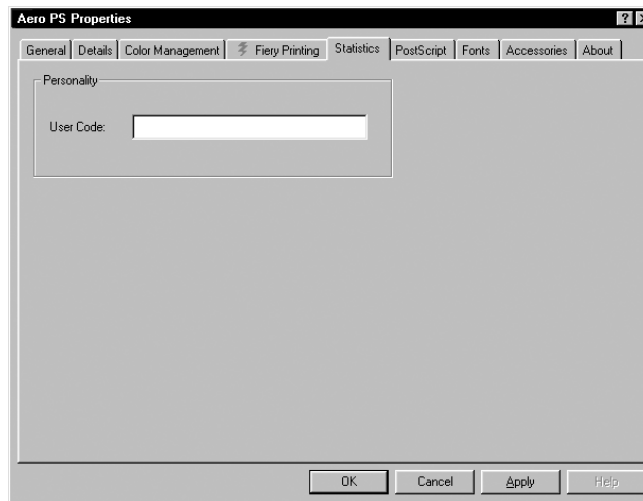
4-6 Special Features

TO ENTER A USER CODE FROM THE POSTSCRIPT OR PCL PRINTER DRIVER:

1. In the Printer's window, right-click the Fiery 3850C icon and choose Properties (Windows 9x/Me), Document Defaults (Windows NT) or Printing Preferences (Windows 2000/XP).

NOTE: Entering User Codes does not work on Windows 2000/XP PostScript printer drivers.

2. Click the Statistics tab.



3. Using a maximum of 8 digits, enter a User Code.
When a User Code is entered, a tally of all jobs printed using this code can be viewed and printed.
4. Click OK.
For more information on exporting or viewing a tally of jobs, see your copier's documentation.

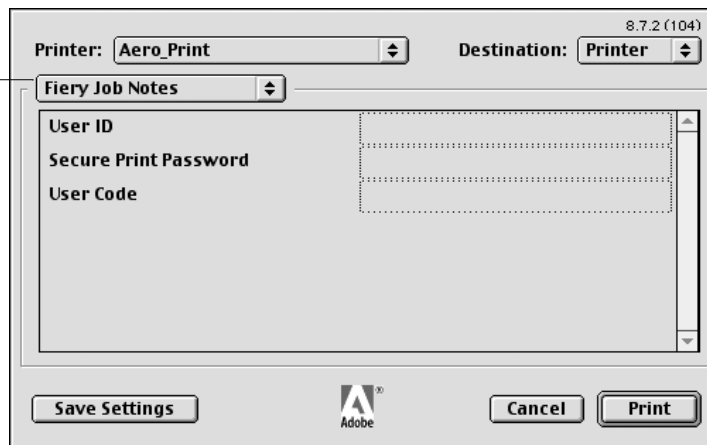
4

4-7 Entering User Codes

TO ENTER A USER CODE FROM THE MAC PRINTER DRIVER

1. Open a file and choose Print from the application's File menu.
2. Go to Fiery Job Notes.

Choose Fiery Job Notes
from the pop-up menu



3. Using a maximum of 8 digits, enter a User Code in the User Code field.
4. Verify print option settings and click Print.
For more information on exporting or viewing a tally of jobs, see your copier's documentation.

5

Chapter 5: Tracking and Managing Print Jobs

Fiery 3850C user software includes a variety of tools that allow you to track and manage print jobs. Access to some tools is controlled by your site administrator, but other tools are available to all users.

- The Status, WebLink, and WebDownloader WebTools do not require any special access privileges. As long as the administrator has provided users with the IP address of the Fiery 3850C, anyone can use these WebTools.
- The Command WorkStation and Fiery WebSpooler all provide the capability to view and control the flow of print jobs to the Fiery 3850C. If the administrator has set an Administrator password in Setup, you need the password to perform most Command WorkStation and Fiery WebSpooler functions. For information on these tools and the access privileges needed to use them, see the *Job Management Guide*.
- For more information on the WebSetup Webtool, see the *Configuration Guide*.

Fiery WebTools

Fiery WebTools reside on the Fiery 3850C hard disk drive but can be accessed over the network from a variety of platforms. The Fiery 3850C has a home page that lets you view server functions and manipulate jobs remotely. This chapter describes only the WebDownloader, Status, and WebLink,. For information on Fiery WebSpooler, see the *Job Management Guide*. For information on WebSetup, see the *Configuration Guide*.

TO ACCESS FIERY WEBTOOLS

1. Start up your Internet browser application.
See *Getting Started* for information about supported platforms and browsers.
2. Enter the IP address or the DNS name of the Fiery 3850C.
Check with the operator or administrator for this information.

5

5-2 Tracking and Managing Print Jobs

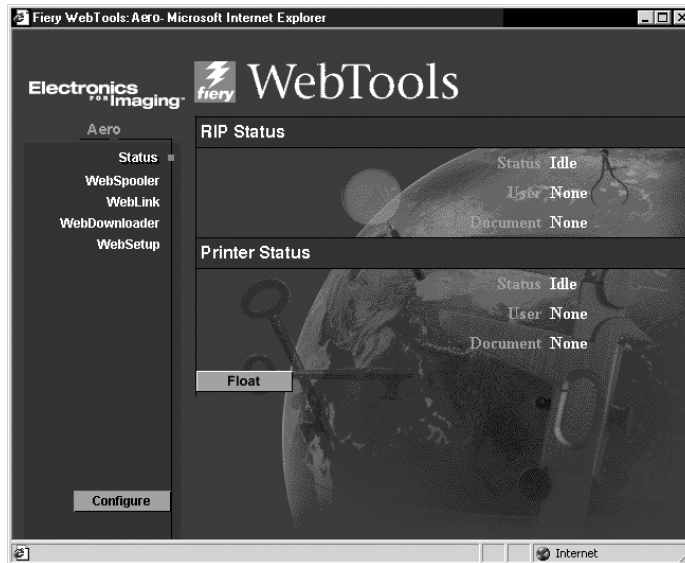
3. If a Log In dialog box appears, select Guest and click OK.

The Log In dialog box appears only if the administrator has set a password. Guest access is sufficient to use the WebDownloader, Status, WebLink, WebSpooler, and Installer, WebTools as described in this chapter.

4. When the Fiery 3850C home page appears, click to select one of the Fiery WebTools. Move the cursor over the buttons to display information about the selections.

Checking Fiery 3850C status with the Status WebTool

You can use the Status WebTool to see what jobs are currently processing and printing. To access the Status WebTool, point your browser to the Fiery 3850C home page and click the Status button. The current RIP Status and Printer Status appear in the window.



To open a new browser window for the Status display, click Float. You can then close other browser windows and leave the Status window open to continue checking the status of the Fiery 3850C. As long as you keep the Status window open, it is dynamically updated.

To obtain more information about the status of jobs, use Fiery WebSpooler or the Command WorkStation, as described in the *Job Management Guide*.

5

5-3 Tracking and Managing Print Jobs

Accessing information with WebLink

The WebLink button on the Fiery 3850C home page provides a link to another web page or to multiple web pages, provided you have a valid Internet connection. The administrator at your site can set the WebLink destination. Check your Fiery 3850C WebLink for any information available there.

Downloading files with WebDownloader

Using WebDownloader, you can send PostScript, Encapsulated PostScript (EPS), and Portable Document Format (PDF), PCL, or text files to the printer without first opening the file in an application.

You can also download PostScript and Adobe Type 1 fonts (*.pfb). When downloading fonts, be sure to check the Font box.

TO DOWNLOAD A FILE WITH WEBDOWNLOADER

1. Start up your Internet browser application.
See *Getting Started* for information about supported platforms and browsers.
2. Enter the IP address or the DNS name of the Fiery 3850C.
3. When the Fiery 3850C home page appears, click the WebDownloader WebTool.
4. Click the WebDownloader WebTool.

5

5-4 Tracking and Managing Print Jobs



5. Select the destination.
A file can be downloaded to the Direct connection, Print, or Hold queues. Files sent to the Print queue are spooled in the printer's memory. Files sent to the Hold queue remain in memory until they are moved to the Print queue or are deleted.
6. Select if you want to automatically download fonts to your system by indicating a checkmark in the Font checkbox.
7. Select if you are downloading a PDF file. and PDF options, such as the number of copies and page range.
8. Click Browse to search for the file, then select the file and click Open.
9. Click Send File.

Appendix A: Print Options

Print options give you access to all the special features of your printer and Fiery 3850C. Print options can be specified in several places—in Fiery 3850C Setup, from the printing application, from ColorWise Pro Tools, from the Command WorkStation and from Fiery WebSpooler. The table in this appendix briefly describes each print option, gives its default setting, and provides information on any constraints or requirements in effect.

Where to set print options

- During Setup

Some settings are specified during Setup by the administrator. For information on the current default server settings, check with the administrator or the operator.

- From applications

With the Adobe PostScript printer drivers, you can specify job settings when you print a job. See Chapter 1, “Printing from Windows Computers” and Chapter 2, “Printing from Mac OS Computers” for information about specifying job settings from applications.

- From ColorWise Pro Tools

You can set the default CMYK Simulation Profile, RGB Source Profile, Output Profile, Rendering Style, Spot Color Matching, Pure Black Text/Graphics, and Black Overprint settings. See the *Color Guide* for more information on using ColorWise Pro Tools.

- Overrides from the Command WorkStation or Fiery WebSpooler.

To change job settings from the Command WorkStation, double-click a job to display the Properties dialog box. To change job settings from Fiery WebSpooler, double-click a job to display the Override Print Settings dialog box. For more information, see the *Job Management Guide*.

Print option override hierarchy

The override hierarchy is as follows:

- A user's printer driver settings override the Fiery 3850C Setup and ColorWise Pro Tools settings.
- Settings made from the Command WorkStation or Fiery WebSpooler override the user's printer driver settings.

Default settings

In the following table, underlined settings in the "Option and settings" column indicate default printer driver settings (PPD defaults). In other words, if you do not use the printer driver interface to configure a particular option, the Fiery 3850C prints the job with the underlined setting.

For options that can be configured during Setup from the Control Panel, Command WorkStation, WebSetup, or ColorWise Pro Tools choosing Printer's default results in the Fiery 3850C printing the job with the Setup setting specified. For options that cannot be configured during Setup, the Fiery 3850C prints the job with a pre-configured "Printer's default" setting. For more information, see the "Requirements, constraints, and information" column.

To find out about the current Setup defaults, print the Configuration page from the Command WorkStation or from the Fiery 3850C Control Panel.

A

A-3 | Print Options

Option and settings: (Default setting is underlined)	Description:	Requirements, constraints, and information:
Black Overprint <u>On/Printer's default</u> /Off	Select Off to print black text with knockouts. Select On to overprint black text.	The Printer's default setting reflects the setting specified in Fiery 3850C Setup. For Windows 9x/Me and Windows NT 4.0, choose Expert Color as the Color Mode to access this option. If this option is set to On , the Combine Separations option must be set to Off . Setting this option to On automatically sets the Pure Black Text/Graphics option to On . This option is not available for PCL. For more information, see page A-10 and the <i>Color Guide</i> .
Brightness 85% Lightest/90% Lighter/95% Light/ <u>100% Normal</u> /105% Dark/ 110% Darker/115% Darkest	Select 85% for a substantially lighter image, 115% for a substantially darker image, or use one of the settings in between.	
CMYK Simulation Profile <u>Printer's default</u> /SWOP-Coated/ DIC/Euroscale/Simulation-1/ Simulation-2/Simulation-3/ Simulation-4/Simulation-5/ Simulation-6/Simulation-7/ Simulation-8/Simulation-9/ Simulation-10/None	Specify the simulation goal to be used for the current print job.	The Printer's default setting reflects the setting specified in Fiery 3850C Setup. For Windows 9x/Me And Windows NT 4.0, choose Expert Color as the Color Mode to access this option. This option is not available for PCL. For more information, see the <i>Color Guide</i> .
Collate <u>Off</u> /On/	Specify how to output multiple-page/multiple-copy jobs.	For more information, see page A-11.

A

A-4 | Print Options

Option and settings: (Default setting is underlined)	Description:	Requirements, constraints, and information:
<p>Color Mode <u>Printer's default</u>/CMYK/Grayscale (from the Mac OS and Windows 2000/XP drivers) OR Print Mode (PS) <u>Standard Color</u>/Expert Color/Grayscale (from the Windows 9x/Me and Windows NT 4.0 driver) OR Print Mode (PCL) <u>Colormetric RGB</u>/Grayscale (from the Windows 9x/Me, Windows 4.0 driver, and Windows 2000/XP)</p>	<p>Specify the color mode for the current print job. Select CMYK, Standard Color, Expert Color, or Color for a full-color document. Select Grayscale for a grayscale or black-and-white document.</p>	<p>The Printer's default setting reflects the setting specified in Fiery 3850C Setup. The options differ depending on which driver you use. For Windows 9x/Me and Windows NT 4.0, you must choose Expert Color to set other color print options, including Pure Black Text/Graphics. PCL does not support Expert Color.</p>
<p>Copies <u>1-999</u></p>	<p>Specify the number of copies of the job to print.</p>	<p>Do not enter a value greater than 999.</p>
<p>Destination <u>Printer's Default</u>/ Standard Tray/ External Tray/ Mailbox Tray 1/ Mailbox 2/ Mailbox 3/ Mailbox 4/ Finisher Shift Tray 1/ Finisher Shift Tray 2</p>	<p>Specify the location of your finished print job.</p>	

A

A-5 | Print Options

Option and settings: (Default setting is underlined)	Description:	Requirements, constraints, and information:
<p>Document Size <u>Letter</u>/Letter (8.5"x11")/A3 (297x420mm)/ B4 JIS(257x364mm)/ A4 (210x297mm)/ B5 JIS(182x257mm)/ A5 (148x210mm)/ A6 (105x148mm)/ A6 (105x148mm)/ 11"x17"/ Legal (8.5"x14")/ 5.5"x8.5"/ Executive (7.25"x10.5")/8"x13"/ 8.5"x13/ 8.25"x13"/ Com 10 Env. (9.5"x 4.125")/ Monarch Env. (7.5"x3.875")/ C6Env. (162x114mm)/ C5Env. (229x162mm)/ DLEnv (220x110mm)/8K/16K/ A5/ A4/ A3/ Statement/ Legal/ Tabloid (NT)/ PostScript Custom Page (NT)/ Custom Page 1-3 (Windows 9x/Me)</p>	<p>Specify the size of the paper which to print the document.</p>	<p>For more information on document sizes, see your printer's Setup Guide documentation.</p>
<p>Duplex <u>Off</u>/Side Binding/Top Binding</p>	<p>Select <u>Off</u> for simplex (single-sided) printing. Select <u>Side Binding</u> for duplex (double-sided) printing with both sides using the same top edge. Select <u>Top Binding</u> for duplex printing with the back side upside down.</p>	<p>For more information, see page A-12.</p>
<p>Halftone Text <u>Detail</u>/Smooth</p>	<p>Select what dither screen you want to use for your text. Select a <u>Detail</u> screen if you want the edges of your text to be better defined.</p>	
<p>Halftone Graphics Detail/<u>Smooth</u></p>	<p>Select what dither screen you want to use for your graphics. Select a <u>Detail</u> screen if you want a sharper image.</p>	
<p>Halftone Image Detail/<u>Smooth</u></p>	<p>Select what dither screen you want to use for your image. Select a <u>Detail</u> screen if you want a sharper image.</p>	

A

A-6 | Print Options

Option and settings: (Default setting is underlined)	Description:	Requirements, constraints, and information:
Input Tray <u>AutoSelect</u> / Tray 1/ Tray 2/ Tray 3/ Tray 4/ Tray 3 (LCT)/ Bypass Tray	Specify the paper tray to use for your job.	The AutoSelect setting automatically selects the tray containing the paper size specified for the job.
Job Type <u>Normal</u> / Check and Print/ Secure Print	Specify what type of print job you want to execute. Select Check and Print to print one copy of your print job to proof before printing multiple copies. Select Secure Print to make your print job private by selecting a user ID and password to enter at the copier LCD.	For more information on Check and Print and Secure Print jobs, see Chapter 4, "Special Features".
Media Type <u>Plain</u> / Recycled/ Special/ Color/ Letterhead/ Preprinted/ Prepunched/ Bond/ Labels/ Transparency/ Thick/ Cardstock/ Plain (Duplex Backside)/ Thick (Duplex Backside)	Specify the type of media for your print job. Select Transparency if you will be printing on transparencies.	
Orientation <u>Portrait</u> /Landscape	Specify the orientation of the document. Select Rotated if you want to rotate the pages of your job 180 degrees.	
(Other) Gamma <u>Printer's default</u> /1.0/1.2/1.4/1.6/ 1.8/2.0/2.2/2.4/2.6/2.8/3.0	Specify a source gamma value for printing RGB images, objects, and text.	Setting this option to Printer's default produces the same result as the 2.2 setting. This option is not available for PCL. To enable this option, RGB Source Profile must be set to Other. For more information, see the <i>Color Guide</i> .

A

A-7 | Print Options

Option and settings: (Default setting is underlined)	Description:	Requirements, constraints, and information:
(Other) Phosphors <u>Printer's default</u> /Hitachi EBU/ Hitachi-Ikegami/NTSC/ Radius Pivot/SMPTE/Trinitron	Specify a source phosphors value for printing RGB images, objects, and text.	Setting this option to <u>Printer's default</u> produces the same result as the SMPTE setting. This option is not available for PCL. To enable this option, RGB Source Profile must be set to Other. For more information, see the <i>Color Guide</i> .
(Other) White Point <u>Printer's default</u> /5000 K (D50)/ 5500 K/6500 K (D65)/7500 K/9300 K	Specify a source white point value for printing RGB images, objects, and text.	Setting this option to <u>Printer's default</u> produces the same result as the 5000 K (D50) setting. This option is not available for PCL. To enable this option, RGB Source Profile must be set to Other. For more information, see the <i>Color Guide</i> .
Output Profile <u>Printer's default</u> /Fiery 3850C 600 dpi v1F/ Fiery 3850C 1200 dpi v1F/ Output-1/Output-2/ Output-3/Output-4/Output-5/ Output-6/Output-7/Output-8/ Output-9/Output-10	Specify the output profile to be used for the current print job.	The <u>Printer's default</u> setting reflects the setting specified in ColorWise Pro Tools. For Windows 9x/Me and Windows NT 4.0, choose Expert Color as the Color Mode to access this option. This option is not available for PCL. See page A-12 and the <i>Color Guide</i> for more information.
Punch <u>Off</u> /Left/Top/Right	Specify where you want to punch holes	The punch option must be installed. See the <i>Getting Started</i> for more information on installable options.
Punch Two Hole <u>No</u> /Yes	Specify if you want to punch two side by side holes.	

A

A-8 | Print Options

Option and settings: (Default setting is underlined)	Description:	Requirements, constraints, and information:
Pure Black Text/Graphics <u>Printer's default</u> /Off/On	Select Off to print black text and graphics as a four color black using C, M, Y, and K toner, and to use normal PostScript rendering. Select On to print black text and graphics as a one color black, using 100% black toner only.	The Printer's default setting reflects the setting specified in Fiery 3850C Setup. For Windows 9x/Me and Windows NT 4.0, choose Expert Color as the Print Mode to access this option. This option is not available for PCL. This option is automatically set to On if the Black Overprint option is set to On . For more information, see the <i>Color Guide</i> .
Rendering Style <u>Printer's default</u> /Photographic/ Presentation/Relative Colorimetric/ Absolute Colorimetric	Specify a default color rendering dictionary (CRD) to be used when you print RGB images, objects, and text.	The Printer's default setting reflects the setting specified in Fiery 3850C Setup. For Windows 9x/Me and Windows NT 4.0, choose Expert Color as the Color Mode to access this option. For more information, see page A-13.
Resolution <u>600x600 dpi</u> / 1200x1200 dpi	Specify a resolution for your print job.	This option is not available for PCL.
RGB Source Profile <u>Printer's default</u> /EFIRGB/sRGB (PC)/ Apple Standard/Other/Source-1/ Source-2/Source-3/Source-4/Source-5/ Source-6/Source-7/Source-8/Source-9/ Source-10/None	Specify a source color space definition for printing RGB images, objects, and text.	The Printer's default setting reflects the setting specified in Fiery 3850C Setup. For Windows 9x/Me and Windows NT 4.0, choose Expert Color as the Color Mode to access this option. See page A-13 and the <i>Color Guide</i> for more information. This option is not available for PCL.
Rotate 180 <u>Yes/No</u>	Specify if you want to rotate the pages of your job 180 degrees.	This option is only available from Mac OS. For Windows, use the Orientation option. Depending on the application you are using, your landscape job may print with the incorrect orientation; if this occurs, or if you select a Stapler Mode (other than Off) and the staple is inserted in the wrong place, select Yes .

A

A-9 | Print Options

Option and settings: (Default setting is underlined)	Description:	Requirements, constraints, and information:
Secure Print Password	Specify a password to enter at the copier LCD to retrieve your private job if you have selected the Secure Print job type.	The Secure Print Password field has an 4-digit character limit.
Slip Sheet <u>On/Off</u>	Specify whether to insert a slip sheet between copies of multiple-copy jobs.	To use this option, your Media Type must be set to Transparency and Paper Source must be set to Bypass Tray.
Slip Sheet Source <u>Tray 1/ Tray 2/ Tray 3/ Tray 4/ Tray 3 (LCT)/ Bypass Tray</u>	Select the tray for the slip sheet source	
Spot Color Matching <u>Printer's default/Off/On</u>	Select <u>Off</u> to print specified PANTONE colors in your job using the current CMYK Simulation and CMYK Simulation Method. Select <u>On</u> to activate the PANTONE Lookup Table. The Fiery 3850C prints specified PANTONE colors in your job by matching the CMYK print blend to the same color from the PANTONE library.	The Printer's default setting reflects the setting specified in Fiery 3850C Setup. For Windows 9x/Me and Windows NT 4.0, choose Expert Color as the Color Mode to access this option. This option is not available for PCL. For more information, see the <i>Color Guide</i> .
Staple <u>Off/ Upper Left Slant/ Upper Left Vertical/ Upper Left Horizontal/ Left 2/ Top 2/ Upper Right Slant/ Upper Right Vertical/ Upper Right Horizontal/ Right 2</u>	Specify whether or not and how to staple the job.	
User ID	Specify a User ID to enter at the copier LCD to retrieve your private job if you have selected the Secure Print job type	The User ID field has an 8-character limit.
User Code	Specify a User Code to tally all jobs printed using that User Code.	The User Code field has an 8-digit limit. For more information on entering User Codes, see Chapter 4, "Special Features".

More about print options

The following sections provide additional information about print options. See the table above for information on the settings, requirements, and constraints in effect for these options.

Black Overprint

When printing black text in combination with a color background or graphics, the text can be printed in one of two ways: either as part of the color background, or on top of the color background. Black Overprint allows you to choose a specific way to print the black text for such a job.

Off—Prints the black text with knockouts. The Fiery 3850C first prints the color background with the black text areas ‘knocked out’ (no color is printed in the text areas); the black text is then printed in the knocked out area, filling in the areas not printed in color. The result is a flatter appearance for the black text.

On—Overprint the black text. Used in combination with the Pure Black Text/Graphics option, the Fiery 3850C first prints the full color background, then lays the black text on top of the color background as 100% K toner. The result is a darker and glossier appearance for the black text. Overprinting also minimizes misregistration and ‘haloing’ problems.

CMYK Simulation Profile

CMYK Simulation Profile allows you to change the simulation goal for the current print job. As the job begins processing, the simulation goal selected in CMYK Simulation Profile is applied before printing.

NOTE: Choosing Printer’s default results in the job being printed with the simulation goal currently set on the Fiery 3850C.

SWOP-Coated—Uses the United States press standard.

DIC—Uses the Japanese press standard.

Euroscale—Uses the European press standard.

Simulation-1 (2,3,4,5...10)—Uses a custom simulation goal. Before selecting this setting, you are required to create a new simulation goal with ColorWise Pro Tools and link the new simulation to one of the custom simulation names, for example, Simulation-1.

A

A-11 | Print Options

None—Uses no simulation goal. Select this setting when the CMYK data for your job has already been separated for your specific printer (for example, when using the Color Management System built into your computer to convert the CMYK data to the printer's color space).

For more information about simulation and calibration, see the *Color Guide*.

Collate

Use this option to specify sorting options.

Off—Copies of a complete job are output, uncollated into the top tray.

On—Copies of a complete job are collated and output into the top tray.

Duplex

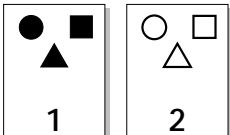
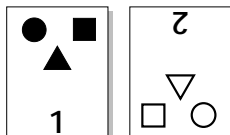
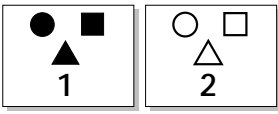
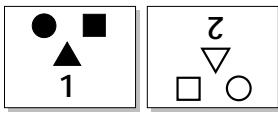
All duplex printing features are available only with plain paper media type.

TO PRINT DUPLEX PAGES:

1. Choose Print in your application, and locate the Duplex print option.
The location of Fiery 3850C print options varies, depending on the printer driver you are using.

2. Choose one of the Duplex settings:

The following table shows how the Duplex settings correspond to printed output:

	Side Binding	Top Binding
Portrait		
Landscape		

Output Profile

Output-1 through Output-10—Uses a custom output profile. Before selecting this setting, you are required to download or create the output profile with ColorWise Pro Tools, then link it with one of the custom output profile names, for example, Output-1.

For information on output color space and color management, see the *Color Guide*.

Rendering Style

Use this option to select a default color rendering dictionary (CRD) to be used when you print RGB images, objects, and text.

Photographic—Optimizes the range of colors on the Fiery 3850C to produce the best results for photographic or bitmapped images.

Presentation—Optimizes the output of pure, saturated colors such as those used in business presentations.

Relative Colorimetric— Provides a close match to the CMYK device being simulated, regardless of the media being used.

Absolute Colorimetric— Provides the closest match to the CMYK device being simulated, including rendering the paper color as the background.

RGB Source Profile

This option is used to specify a source color space for RGB data.

EFIRGB—Optimal source space for printing to the Fiery 3850C. This setting provides consistent output across platforms.

sRGB (PC)—Specifies the source space of a generic Windows computer monitor.

Apple Standard—Specifies the source space of a Mac OS computer monitor.

Other—Allows you to specify a custom RGB source setting using the (Other) Gamma, (Other) Phosphors, and (Other) White Point print options.

Source-1 through Source-10—Uses a custom source profile. Before selecting this setting, you are required to download the source profile to the Fiery 3850C with ColorWise Pro Tools, then link it with one of the custom source profile names, for example, Source-1.

For information on source color space and color management, see the *Color Guide*.

B

B-1 | Font Lists

Appendix B: Font Lists

This appendix lists the built-in PostScript and PCL printer fonts included with your Fiery 3850C.

PostScript and PCL printer fonts

The following tables list the 136 built-in PostScript printer fonts and 46 PCL printer fonts on the Fiery 3850C.

In addition to the PostScript fonts listed below, two Adobe Multiple Master fonts are included and are used for font substitution in PDF files.

NOTE: For Mac OS computers, install the corresponding screen fonts from the User Software CD. For instructions, see *Getting Started*.

Adobe Type 1 fonts

The Fiery 3850C includes 126 Adobe Type 1 fonts:

- The Mac OS column lists the name as it appears on the Font menu on a Mac OS computer. For example, in most applications, to use “Bodoni-Bold,” choose Bodoni Bold from the Font menu.
- The Windows menu name is the name as it appears on the Font menu on a Windows computer. The style refers to the style that must be selected in the application to access the particular PostScript font. For example, to use “Bodoni-Bold,” choose Bodoni from the Font menu and Bold from the Style menu.

PostScript name:	Mac OS menu name:	Windows menu name, style:
AlbertusMT-Light	Albertus MT Lt	Albertus MT Lt
AlbertusMT	Albertus MT	Albertus MT
AlbertusMT-Italic	Albertus MT It	Albertus MT, Italic
AntiqueOlive-Roman	Antique Olive Roman	Antique Olive Roman
AntiqueOlive-Bold	Antique Olive Bold	Antique Olive Roman, Bold
AntiqueOlive-Italic	Antique Olive Italic	Antique Olive Roman, Italic

B

B-2 Font Lists

PostScript name:	Mac OS menu name:	Windows menu name, style:
AntiqueOlive-Compact	Antique Olive Compact	Antique Olive Compact
Arial-BoldItalicMT	Arial Bold Italic	Arial, Bold Italic
Arial-BoldMT	Arial Bold	Arial, Bold
Arial-ItalicMT	Arial Italic	Arial, Italic
ArialMT	Arial	Arial
AvantGarde-Book	Avant Garde	AvantGarde
AvantGarde-Demi	Avant Garde Demi	AvantGarde, Bold
AvantGarde-BookOblique	Avant Garde BookOblique	AvantGarde, Italic
AvantGarde-DemiOblique	Avant Garde DemiOblique	AvantGarde, Bold Italic
Bodoni	Bodoni	Bodoni
Bodoni-Bold	Bodoni Bold	Bodoni, Bold
Bodoni-Italic	Bodoni Italic	Bodoni, Italic
Bodoni-BoldItalic	Bodoni BoldItalic	Bodoni, Bold Italic
Bodoni-Poster	Bodoni Poster	Bodoni Poster
Bodoni-PosterCompressed	Bodoni PosterCompressed	Bodoni PosterCompressed
Bookman-Light	Bookman	Bookman
Bookman-Demi	Bookman Demi	Bookman, Bold
Bookman-LightItalic	Bookman LightItalic	Bookman, Italic
Bookman-DemiItalic	Bookman DemiItalic	Bookman, Bold Italic
Carta	Carta	Carta
Clarendon-Light	Clarendon Light	Clarendon Light
Clarendon	Clarendon	Clarendon
Clarendon-Bold	Clarendon Bold	Clarendon, Bold
CooperBlack	Cooper Black	Cooper Black
CooperBlack-Italic	Cooper Black Italic	Cooper Black, Italic
Copperplate-ThirtyThreeBC	Copperplate33bc	Copperplate33bc

B

B-3 Font Lists

PostScript name:	Mac OS menu name:	Windows menu name, style:
Copperplate-ThirtyTwoBC	Copperplate32bc	Copperplate32bc
Coronet	Coronet	Coronet
Courier	Courier	Courier
Courier-Bold	Courier Bold	Courier, Bold
Courier-Oblique	Courier Oblique	Courier, Italic
Courier-BoldOblique	Courier BoldOblique	Courier, Bold Italic
Eurostile	Eurostile	Eurostile
Eurostile-Bold	Eurostile Bold	Eurostile Bold
Eurostile-ExtendedTwo	Eurostile ExtendedTwo	Eurostile ExtendedTwo
Eurostile-BoldExtendedTwo	Eurostile BoldExtendedTwo	Eurostile ExtendedTwo, Bold
GillSans	GillSans	GillSans
GillSans-Bold	GillSans Bold	GillSans, Bold
GillSans-Italic	GillSans Italic	GillSans, Italic
GillSans-BoldItalic	GillSans BoldItalic	GillSans, Bold Italic
GillSans-Light	GillSans Light	GillSans Light
GillSans-LightItalic	GillSans LightItalic	GillSans Light, Italic
GillSans-Condensed	GillSans Condensed	GillSans Condensed
GillSans-BoldCondensed	GillSans BoldCondensed	GillSans Condensed, Bold
GillSans-ExtraBold	GillSans ExtraBold	GillSans ExtraBold
Goudy	Goudy	Goudy
Goudy-Bold	Goudy Bold	Goudy, Bold
Goudy-Italic	Goudy Italic	Goudy, Italic
Goudy-BoldItalic	Goudy BoldItalic	Goudy, Bold Italic
Goudy-ExtraBold	Goudy ExtraBold	Goudy ExtraBold
Helvetica	Helvetica	Helvetica
Helvetica-Bold	Helvetica Bold	Helvetica, Bold

B

B-4 Font Lists

PostScript name:	Mac OS menu name:	Windows menu name, style:
Helvetica-Oblique	Helvetica Oblique	Helvetica, Italic
Helvetica-BoldOblique	Helvetica BoldOblique	Helvetica, Bold Italic
Helvetica-Narrow	Helvetica Narrow	Helvetica-Narrow
Helvetica-Narrow-Bold	Helvetica Narrow Bold	Helvetica-Narrow, Bold
Helvetica-Narrow-Oblique	Helvetica Narrow Oblique	Helvetica-Narrow, Italic
Helvetica-Narrow-BoldOblique	Helvetica Narrow BoldObl	Helvetica-Narrow, Bold Italic
Helvetica-Condensed	Helvetica Condensed	Helvetica Condensed
Helvetica-Condensed-Bold	Helvetica CondensedBold	Helvetica Condensed, Bold
Helvetica-Condensed-Oblique	Helvetica CondensedOblique	Helvetica Condensed, Italic
Helvetica-Condensed-BoldObl	Helvetica CondensedBoldObl	Helvetica Condensed, Bold Italic
HoeflerText-Ornaments	Hoefler Text Ornaments	Hoefler Text Ornaments
JoannaMT	Joanna MT	Joanna MT
JoannaMT-Bold	Joanna MT Bd	Joanna MT, Bold
JoannaMT-Italic	Joanna MT It	Joanna MT, Italic
JoannaMT-BoldItalic	Joanna MT Bd It	Joanna MT, Bold Italic
LetterGothic	Letter Gothic	Letter Gothic
LetterGothic-Bold	Letter Gothic Bold	Letter Gothic, Bold
LetterGothic-Slanted	Letter Gothic Slanted	Letter Gothic, Italic
LetterGothic-BoldSlanted	Letter Gothic BoldSlanted	Letter Gothic, Bold Italic
LubalinGraph-Book	Lubalin Graph	LubalinGraph
LubalinGraph-Demi	Lubalin Graph Demi	LubalinGraph, Bold
LubalinGraph-BookOblique	Lubalin Graph BookOblique	LubalinGraph, Italic
LubalinGraph-DemiOblique	Lubalin Graph DemiOblique	LubalinGraph, Bold Italic
Marigold	Marigold	Marigold
MonaLisa-Recut	Mona Lisa Recut	Mona Lisa Recut

B

B-5 Font Lists

PostScript name:	Mac OS menu name:	Windows menu name, style:
NewCenturySchlbk-Roman	New Century Schlbk	NewCenturySchlbk
NewCenturySchlbk-Bold	New Century Schlbk Bold	NewCenturySchlbk, Bold
NewCenturySchlbk-Italic	New Century Schlbk Italic	NewCenturySchlbk, Italic
NewCenturySchlbk-BoldItalic	New Century Schlbk BoldIt	NewCenturySchlbk, Bold Italic
Optima	Optima	Optima
Optima-Bold	Optima Bold	Optima, Bold
Optima-Italic	Optima Italic	Optima, Italic
Optima-BoldItalic	Optima BoldItalic	Optima, Bold Italic
Oxford	Oxford	Oxford
Palatino-Roman	Palatino	Palatino
Palatino-Bold	Palatino Bold	Palatino, Bold
Palatino-Italic	Palatino Italic	Palatino, Italic
Palatino-BoldItalic	Palatino BoldItalic	Palatino, Bold Italic
StempelGaramond-Roman	StempelGaramond Roman	StempelGaramond Roman
StempelGaramond-Bold	StempelGaramond Bold	StempelGaramond Roman, Bold
StempelGaramond-Italic	StempelGaramond Italic	StempelGaramond Roman, Italic
StempelGaramond-BoldItalic	StempelGaramond BoldItalic	StempelGaramond Roman, Bold Italic
Symbol	Symbol	Symbol
Tekton	Tekton	Tekton
Times-Roman	Times	Times
Times-Bold	Times Bold	Times, Bold
Times-Italic	Times Italic	Times, Italic
Times-BoldItalic	Times BoldItalic	Times, Bold Italic
TimesNewRomanPS-BoldMT	Times New Roman Bold	Times New Roman, Bold

B

B-6 Font Lists

PostScript name:	Mac OS menu name:	Windows menu name, style:
TimesNewRomanPS-BoldItalicMT	Times New Roman Bold Italic	Times New Roman, Bold Italic
TimesNewRomanPS-ItalicMT	Times New Roman Italic	Times New Roman, Italic
TimesNewRomanPSMT	Times New Roman	Times New Roman
Univers-Extended	Univers Extended	Univers Extended
Univers-BoldExt	Univers BoldExt	Univers Extended, Bold
Univers-ExtendedObl	Univers ExtendedObl	Univers Extended, Italic
Univers-BoldExtObl	Univers BoldExtObl	Univers Extended, Bold Italic
Univers-Light	Univers 45 Light	Univers 45 Light
Univers-Bold	Univers 65 Bold	Univers 45 Light, Bold
Univers-LightOblique	Univers 45 LightOblique	Univers 45 Light, Italic
Univers-BoldOblique	Univers 65 BoldOblique	Univers 45 Light, Bold Italic
Univers	Univers 55	Univers 55
Univers-Oblique	Univers 55 Oblique	Univers 55, Italic
Univers-CondensedBold	Univers 67 CondensedBold	Univers 47 CondensedLight, Bold
Univers-CondensedBoldOblique	Univers 67 CondensedBoldOblique	Univers 47 CondensedLight, Bold Italic
Univers-Condensed	Univers 57 Condensed	Univers 57 Condensed
Univers-CondensedOblique	Univers 57 CondensedOblique	Univers 57 Condensed, Italic
ZapfChancery-MediumItalic	Zapf Chancery	ZapfChancery
ZapfDingbats	Zapf Dingbats	ZapfDingbats



TrueType fonts

The Fiery 3850C includes 10 TrueType fonts:

PostScript name:	Mac OS menu name:	Windows menu name, style:
Apple-Chancery	Apple Chancery	Apple Chancery
Chicago	Chicago	Chicago
Geneva	Geneva	Geneva
HoeflerText-Black	Hoefler Text Black	Hoefler Text Black
HoeflerText-BlackItalic	Hoefler Text Black	Hoefler Text Black, Italic
HoeflerText-Italic	Hoefler Text	Hoefler Text, Italic
HoeflerText-Regular	Hoefler Text	Hoefler Text
Monaco	Monaco	Monaco
New York	New York	New York
Wingdings-Regular	Wingdings	Wingdings

PCL printer fonts

The following 46 PCL fonts are resident on the Fiery:

- Albertus Extra Bold, Albertus Medium
- Antique Olive, Antique Olive Bold, Antique Olive Italic
- Arial, Arial Bold, Arial Italic, Arial Bold Italic
- CG Omega, CG Omega Bold, CG Omega Italic, CG Omega Bold Italic, CG Times, CG Times Bold, CG Times Italic, CG Times Bold Italic
- Coronet
- Courier, Courier Bold, Courier Italic, Courier Bold Italic
- Garamond Antigua, Garamond Halbfett, Garamond Kursiv, Garamond Kursiv Halbfett
- Letter Gothic, Letter Gothic Bold, Letter Gothic Italic
- Line Printer (a bitmap font)
- Marigold
- Symbol
- Times New, Times New Bold, Times New Italic, Times New Bold Italic
- Univers Bold, Univers Bold Condensed, Univers Bold Condensed Italic, Univers Italic, Univers Medium, Univers Medium Condensed, Univers Medium Condensed Italic, Univers Bold Italic
- Wingdings

Appendix C: Troubleshooting

This appendix provides troubleshooting tips.

Maintaining optimal system performance

The Fiery 3850C does not require maintenance. Beyond the routine requirements of servicing and maintaining the printer and replenishing consumables there are a few things you can do to improve the overall performance of your system:

- Reduce unnecessary two-way communication.

If users notice that the server is frequently too busy to receive jobs, it may be because several users are running utilities that are updated often. Large numbers of remote users running Fiery WebTools may have a significant effect on Fiery 3850C performance.

- Schedule the printing workload by checking job ticket information before printing.

Print jobs with the same output and paper specifications together to minimize paper changes. Also, print routine jobs while you prepare to print jobs with special instructions or special media.

- Avoid printing with the server “Disk full” warning.

If you see this warning, delete jobs from the Queues window that have been held for a long time and are not likely to be needed. Avoid this condition by deleting old jobs on a regular basis. The date associated with a job is the original date it was sent.

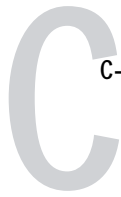
Troubleshooting

In case of problems, and before you call for service, check the guidelines in this section. If you are unable to resolve the problem, make a note of the error condition and contact your authorized service/support center.

This section provides some troubleshooting guidelines should a problem arise. If you are unable to resolve a problem after referring to this section, contact your site operator or administrator.

General printing problems

If this happens:	Try this:
You cannot select or view one of the queues.	<ul style="list-style-type: none"> • Have your system administrator enable the queue in Setup.
Printing ties up your computer for too long.	<ul style="list-style-type: none"> • Print to a queue instead of to the Direct connection. When you print to a queue, the job is stored on the Fiery 3850C until it can be processed and printed; when you print to the Direct connection, the job cannot be sent to the Fiery 3850C until the previous job is finished processing, so you must wait longer to use your computer.
Message requests a paper size that you do not have.	<ul style="list-style-type: none"> • Cancel the job and do one of the following: If you are printing a file from an application, change the page size in the Page Setup dialog box.



If this happens:	Try this:
<p>Fiery 3850C does not respond to a Print command.</p>	<ul style="list-style-type: none">• Did you select the Fiery 3850C as the current printer? Before printing, you must select the Fiery 3850C as the current printer from your Mac OS, Windows, or UNIX workstation.• Make sure that the printer is switched on. Someone may have turned the printer off. Even with the printer off, the Fiery 3850C appears in the Chooser as long as the Fiery 3850C itself is turned on.• Make sure that the printer is online.• If you are printing over an IPX (Novell) network, verify through the PCONSOLE utility that the job was sent to the Novell queue and that the queue is being used by the Fiery 3850C.• Make sure that the job does not contain a PostScript error. Check with the operator, or use Fiery WebSpooler to check the job's status. A job containing a PostScript error appears in red in the Fiery WebSpooler display. To obtain information on the PostScript error, make sure the Print to PS Error setup option is set to Yes. See the <i>Configuration Guide</i> for more information.
<p>The Test Page, or other pages, do not print from the Control Panel.</p>	<ul style="list-style-type: none">• Check the printer display for an error message and correct the problem.• Restart the Fiery 3850C. If there is no error message at the printer, you should restart the Fiery 3850C.

Problems with print quality

If this happens:	Try this:
Print settings for your job output do not match the settings you gave.	<ul style="list-style-type: none"> • Make sure that you did not override the setting for the job in another place. For information about options and overrides, see Appendix A.
You get poor printing results.	<ul style="list-style-type: none"> • Does your application require one of the Fiery 3850C printer description files? If you are printing from Adobe PageMaker, make sure that the Fiery 3850C printer description file is installed correctly. For information about installing these files, see <i>Getting Started</i> and the documentation for your application software.
Your printed file appears too dark.	<ul style="list-style-type: none"> • Adjust the Brightness option. You can use the Brightness option when printing from an application or from Fiery Downloader to lighten your image whenever you print a PostScript or Encapsulated PostScript (EPS) file.
QuickDraw fill patterns print as solids.	<ul style="list-style-type: none"> • Use the Adobe PostScript Printer driver.

Problems with Fiery Downloader

If this happens:	Try this:
General problems	<ul style="list-style-type: none"> • Make sure that the connections are properly set. <i>See Getting Started.</i>
You have problems downloading a font with Fiery Downloader.	<ul style="list-style-type: none"> • Check with the administrator to make sure that the Direct connection is enabled. The Direct connection must be used to download fonts. (Files can be downloaded via the Print or Hold queue.)
Extra blank page prints after a Fiery Downloader job.	<ul style="list-style-type: none"> • Turn off the “Showpage (after EPS file)” option. This option adds a special PostScript command that will cause an extra blank page to print if it is not needed.

Problems with Fiery WebTools

If this happens:	Try this:
You cannot connect to Fiery WebTools, or it takes a long time to connect.	<ul style="list-style-type: none">• Check with the administrator to make sure Web Services are enabled in Fiery 3850C Setup.• Make sure you have the correct IP address or DNS name for the Fiery 3850C. Check with the administrator or print a Configuration page from the Fiery 3850C Control Panel.• Clear the cache (Netscape Communicator) or history (Microsoft Internet Explorer).

Index

Numerics

2-sided printing, *see* Duplex option

A

Absolute Colorimetric rendering style

option A-13

Adobe Type 1 fonts B-1

B

Black Overprint option A-3, A-10

Brightness option A-3

BSD 3-2

C

calibration, bypassing 4-1

CMYK Simulation Profile option 4-1, A-3, A-10

Collate option A-3

Color Mode option A-4

ColorWise Pro Tools 4-1

job overrides A-1

Command WorkStation

managing print jobs 5-1

overriding Printer Setup settings 1-4, 1-15, 1-19, 1-21, 2-5

Control Panel, overriding printer settings 1-19

Custom Page Sizes

defining for Mac OS 2-6

defining for Windows 2000 1-29

defining for Windows NT 4.0 1-22, 1-24, 1-29

Cyan-Magenta-Yellow-Black (color model), *see* CMYK

D

default settings, *see* printer default settings

DIC simulation goal 4-1, A-10

Direct connection C-5

access xiv

not in Chooser, Mac OS 2-2

Duplex option A-12

E

EPS (Encapsulated PostScript) files

downloading 5-3

downloading from Windows 1-1

Euroscale simulation goal 4-1, A-10

F

Fiery Downloader

PDF files 1-1

troubleshooting C-5

Fiery WebTools

accessing xiv, 5-1, 5-2

home page 5-2

overview 5-3

problems with C-6

Status 5-2

WebLink 5-3

WebSpooler 1-15, 1-19, 1-21, 2-5

font list

Adobe Type 1 B-1

PCL B-8

PostScript B-1 to B-6

TrueType B-7

fonts

Adobe Type 1 B-1

TrueType B-7

G

Gamma option A-6

H

Hold queue xiv, 2-2

J

job overrides

- (Other) Gamma option A-6
- (Other) Phosphors option A-7
- (Other) White Point option A-7
- Black Overprint option A-3, A-10
- Brightness option A-3
- CMYK Simulation Profile option A-3, A-10
- Collate option A-3
- Color Mode option A-4
- Duplex option A-12
- print settings A-1
- Pure Black Text Graphics option A-8
- Rendering Style option A-8, A-13
- RGB Source option A-8
- Slip Sheet option A-9
- Spot Color Matching option A-9

L

- lp command 3-2
- lpq command 3-1, 3-2, 3-3
- lpr command 3-1
- lprm command 3-1, 3-3
- lpstat command 3-2

M

- Mac OS
 - Paper Source menu 2-4
 - PostScript printer setup 2-3 to 2-6
 - Printer Specific Options menu 2-5
 - printing 2-1
 - tray selection 2-4
- Match Copy
 - CMYK Simulation option 4-1
- Media Type menu
 - Windows 9x/Me 1-3, 1-14, 1-20

N

- None, CMYK Simulation option A-11

O

- Orientation option A-6
- (Other) Gamma option A-6, A-13
- (Other) Phosphors option A-7, A-13

- (Other) White Point option A-7, A-13
- Output Profile A-12
- Output Profile option A-7
- overrides, of job settings A-1

P

- Page Size menu
 - Windows 9x/Me 1-20
- paper, sizes supported xiii
- Paper Source menu
 - Mac OS 2-4
 - Windows 9x/Me 1-20
- parallel port
 - printing with 1-34
- PCL printer description files, *see* PDDs
- PCL printer drivers
 - explained xiii
 - Windows 9x/Me 1-1
 - Windows NT 4.0 1-12, 1-16
- PDDs
 - defined xiii
- PDF files
 - downloading 5-3
 - downloading from Windows 1-1
- performance, optimizing C-1
- Phosphors option A-7
- Photographic rendering style option A-13
- Portable Document Format, *see* PDF files
- PostScript
 - downloading files 5-3
 - font list B-1 to B-6
- PostScript printer description files, *see* PPDs
- PostScript printer drivers
 - explained xiii
 - Mac OS 2-1
 - Windows 2000 1-16
 - Windows 9x/Me 1-1
 - Windows NT 4.0 1-12
- PPDs
 - defined xiii
- PPDs (PostScript printer description files)
 - options A-1

- setting print options with Mac OS 2-1
 - setting print options with Windows 2000 1-16
- Presentation rendering style option A-13
- press simulations 4-1
- Print command (Windows) 1-1
- Printer Control Language, *see* PCL
- printer default settings
 - specified by administrator in Setup xiv
 - where to set A-1
- printer setup
 - Mac OS 2-3 to 2-6
 - settings 1-19
 - Windows 2000 1-16 to 1-19
 - Windows 9x/Me 1-2 to 1-12
 - Windows NT 4.0 1-24 to 1-34
- Printer Specific Options menu 2-5
- printing
 - duplex pages 4-2, A-12
 - from WebDownloader 5-3
 - Mac OS 2-1
 - on the network xiv
 - to local port 1-34
 - troubleshooting C-2 to C-5
 - Windows 2000 1-16
 - Windows 9x/Me 1-1
 - Windows NT 4.0 1-12
 - with parallel port 1-34
- print options
 - Mac OS 2-3 to 2-6
 - Windows 2000 1-16 to 1-19
 - Windows 9x/Me 1-2 to 1-12
 - Windows NT 4.0 1-24 to 1-34
- Print queue xiv
- Pure Black Text Graphics option A-8

Q

- queues, access to xiv

R

- Relative Colorimetric rendering style option A-13

- remote users xi
- Rendering Style option A-8, A-13
- resolutions supported xiii
- RGB Source option A-8, A-13
- RIPping xiii
- Rotate 180 option A-8

S

- Saved Settings 1-5
- Shortcuts 1-10
- simulations 4-1
- Slip Sheet option A-9
- SMB printing 1-2, 1-16
- Solaris 2.x 3-2
- Spot Color Matching option A-9
- Status WebTool, *see* Fiery WebTools
- SunOS 4.1.x 3-2
- SWOP-Coated simulation A-10
- SWOP-Coated simulation goal 4-1

T

- TCP/IP printing 3-1
- tray selection
 - Mac OS 2-4
- troubleshooting
 - Fiery Downloader C-5
 - general printing problems C-2 to C-5
 - problems with print quality C-4
- TrueType fonts B-7
- two-sided printing, *see* Duplex option

U

- UNIX
 - BSD (Berkeley Software Distribution)
 - variant of 3-3
 - displaying jobs in queue 3-2
 - printing with 3-1
 - removing jobs from queue 3-3
 - System V 3-2

W

- WebLink, *see* Fiery WebTools

- WebSpooler, *see* Fiery WebTools
- WebTools, *see* Fiery WebTools
- White Point option A-7
- Windows 2000
 - printing with 1-16
- Windows 9x/Me
 - Media Type 1-3, 1-14, 1-20
 - Page size area 1-20
 - Paper Source menu 1-20
 - PCL printer driver 1-1
 - PostScript printer driver 1-1
 - printing with 1-1
 - setting print options 1-2 to 1-12
- Windows NT 4.0
 - printing with 1-12
 - print options 1-24 to 1-34
- Windows XP
 - See Windows 2000 1-1

